

MODEL : DLM-5200N

List No : 0896-08

# PARTS LIST

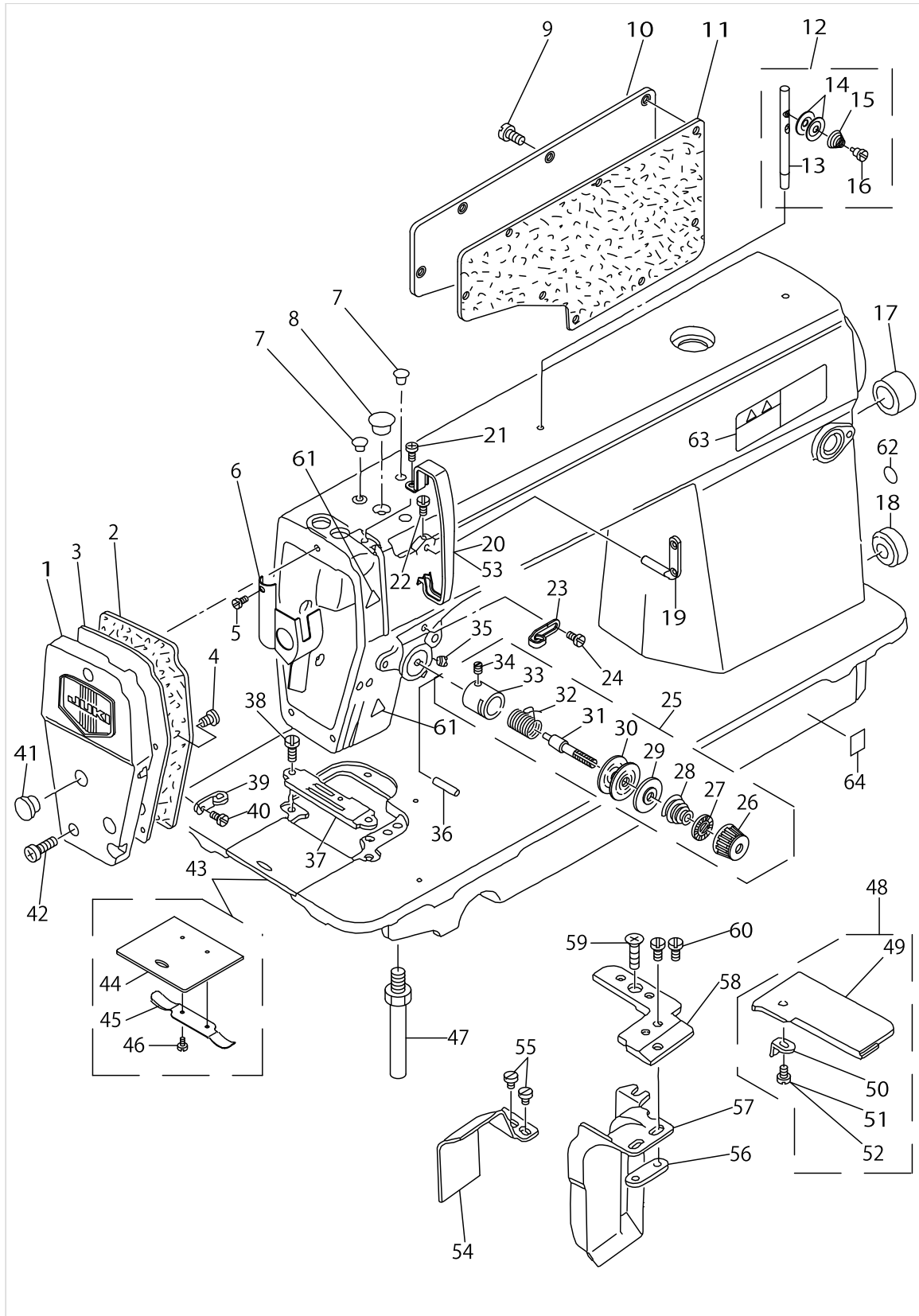
Published:09/10/2017

## CONTENTS

---

MACHINE FRAME & MISCELLANEOUS COVER COMPONENTS .....	1
MAIN SHAFT & THREAD TAKE-UP LEVER COMPONENTS .....	5
NEEDLE BAR, UPRIGHT SHAFT & HOOK DRIVING SHAFT COMPONENTS .....	7
HAND LIFTER COMPONENTS .....	9
FEED MECHANISM COMPONENTS.....	11
KNIFE COMPONENTS.....	15
OIL LUBRICATION COMPONENTS .....	17
OIL RESERVOIR COMPONENTS .....	19
BELT COVER & BOBBIN WINDER COMPONENTS .....	21
THREAD STAND COMPONENTS.....	23
TABLE OF EXECHANGING GAUGES (1).....	25
TABLE OF EXECHANGING GAUGES (2).....	29
LIST FOR INFORMATION OF CHANGE.....	33
HOW TO MAKE USE OF THIS PARTS LIST .....	34

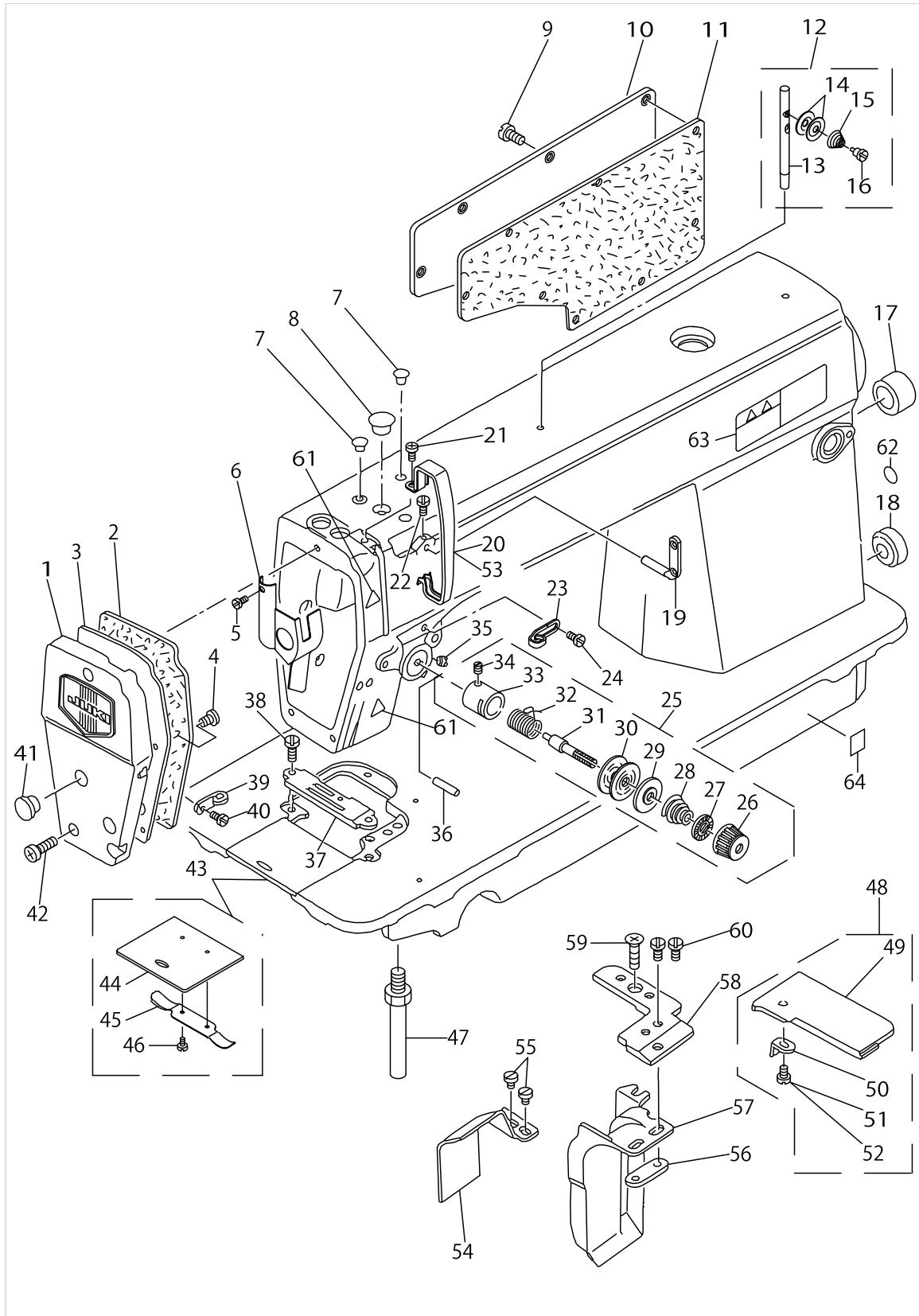
MACHINE FRAME & MISCELLANEOUS COVER COMPONENTS



MACHINE FRAME & MISCELLANEOUS COVER COMPONENTS

No.	Parts No.	Parts name	Remarks	Level	Cons	Qty
1	11336559	FACE PLATE ASM.				1
2	11000304	FACE PLATE GASKET				1
3	11330602	FACE PLATE COVER				1
4	SS1110840SP	SCREW 11/64-40 L=8				3
5	SS6080410SP	SCREW 1/8-44 L=4				1
6	22900757	FACE PLATE OIL SHIELD ASM.				1
7	TA0850604R0	RUBBER PLUG				2
8	TA1250705R0	RUBBER PLUG				1
9	SS4120915SP	SCREW 3/16-28 L=9				8
10	22900401	WINDOW PLATE				1
11	11003308	GASKET				1
12	22932552	NEEDLE THREAD GUIDE PIN ASM.				1
13	22932503	THREAD GUIDE ROD		*		1
14	22932602	THREAD GUIDE DISK		*		2
15	22932701	THREAD GUIDE DISK SPRING		*		1
16	SD0380552SL	HINGE SCREW D=3.8 H=5.5		*		1
17	TA2000502R0	RUBBER PLUG				1
18	TA2101002R0	RUBBER PLUG				1
19	22920706	TWO EYELET				1
20	22900609	THREAD TAKE-UP LEVER COVER				1
21	SS4120615SP	SCREW 3/16-28 L=6				1
22	SS4120615SP	SCREW 3/16-28 L=6				1
23	22920508	ARM THREAD GUIDE A				1
24	22921001	SCREW				1
25	22945356	THREAD TENSION ASM.				1
26	22921308	THREAD TENSION NUT		*		1
27	22921407	ROTATION STOPPER		*		1
28	22921704	THREAD TENSION SPRING A		*		1
29	22921803	DISK STOPPER		*		1
30	22921506	THREAD TENSION DISK		*		2
31	22921209	THREAD TENSION POST		*		1
32	22921605	THREAD TAKE-UP SPRING		*		1
33	22945307	THREAD TENSION POST BASE		*		1
34	SS8090670SP	SCREW 9/64-40 L= 5.5		*		1
35	SS8150710TP	SCREW 15/64-28 L=7				1
36	22920904	PIN				1
37	B1190522S00	GAUGE PLATE 1/8 S	SEE THE TABLE OF EXCHANGING GAUGES			1
38	SS2110920TP	SCREW 11/64-40 L=8.5				2
39	11331402	ARM THREAD GUIDE B				1
40	SS6110610TP	SCREW 11/64-40 L=6				1
41	TA1250406R0	RUBBER PLUG D=12.5 L=4				2
42	SS4121615SP	SCREW 3/16-28 L=16				3
43	22901250	SLIDE PLATE ASM.				1
44	22901201	SLIDE PLATE		*		1
45	22901300	SLIDE PLATE SPRING		*		1
46	SS6060210SP	SCREW 3/32-56 L= 1.9		*		2

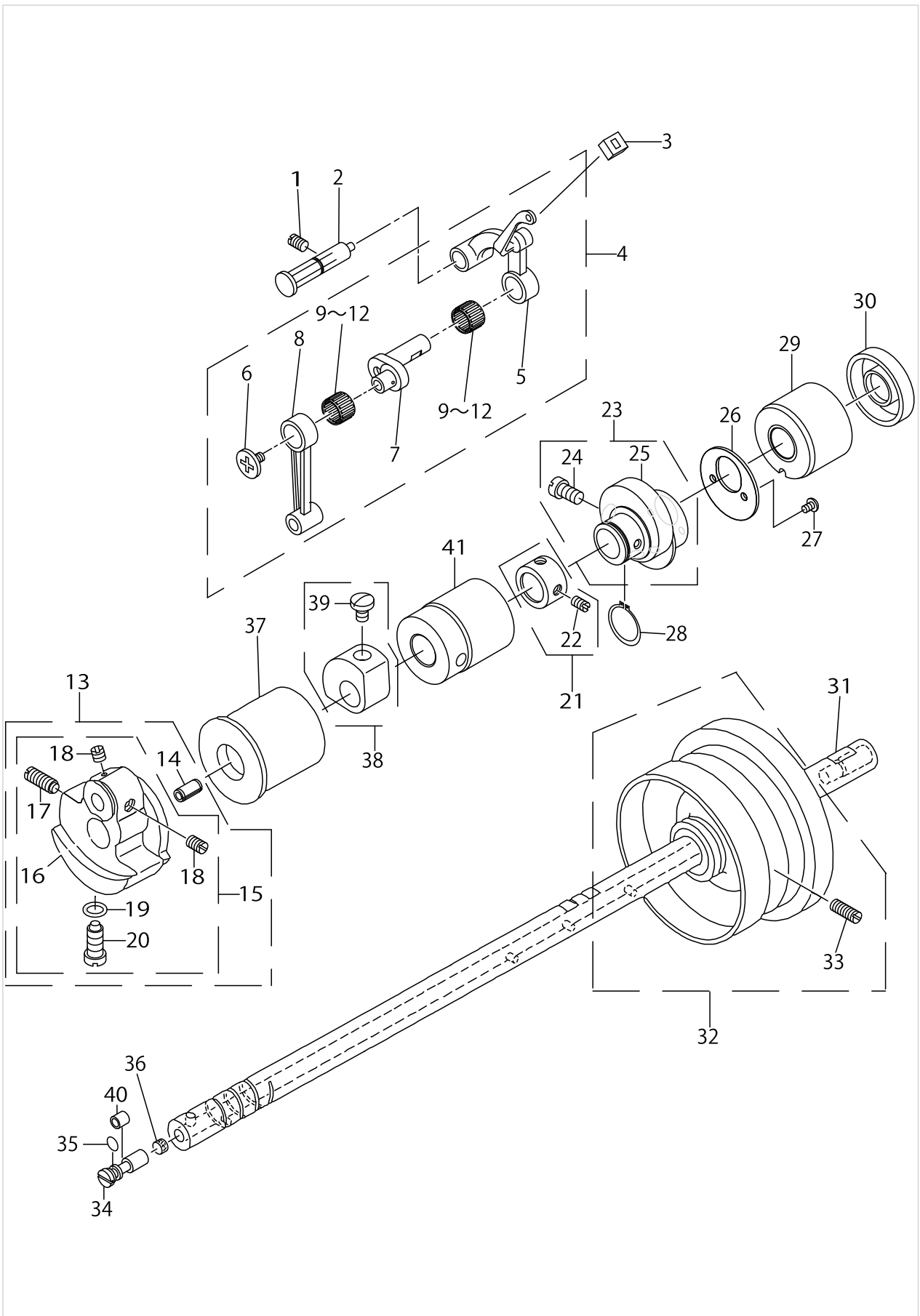
MACHINE FRAME & MISCELLANEOUS COVER COMPONENTS



MACHINE FRAME & MISCELLANEOUS COVER COMPONENTS

No.	Parts No.	Parts name	Remarks	Level	Cons	Qty
47	22901003	BED SCREW STUD				4
48	B11155310AD	THROAT PLATE COVER ASM.	SEE THE TABLE OF EXCHANGING GAUGES			1
49	B111553100D	THROAT PLATE COVER.		*		1
50	B1115522000A	OPEN COVER SPRING		*		1
51	SS6080320SP	SCREW 1/8-44 L= 2.5		*		1
52	SS4080310SP	SCREW 1/8-44 L=3.4		*		1
53	11415205	THREAD TAKE-UP LEVER COVER(JE)	FOR JE			1
54	11346400	WASTE MATERIAL GUIDE	SEE THE TABLE OF EXCHANGING GAUGES			1
55	SS6080410SP	SCREW 1/8-44 L=4				2
56	B1193530000	WASTE MATERIAL GUARD PLATE				1
57	11346905	WASTE MATERIAL GUARD E	SEE THE TABLE OF EXCHANGING GAUGES			1
58	11346004	NEEDLE PLATE A	SEE THE TABLE OF EXCHANGING GAUGES			1
59	SS2110920TP	SCREW 11/64-40 L=8.5				2
60	SS6080410SP	SCREW 1/8-44 L=4				2
61	CM300200001	ATTENTION SEAL				2
62	22901805	GROUND MARK				1
63	CM301300001	SAFETY LABEL				1
64	40116677	GOST_SAFTY_LABEL_S	FOR JE			1

# MAIN SHAFT & THREAD TAKE-UP LEVER COMPONENTS

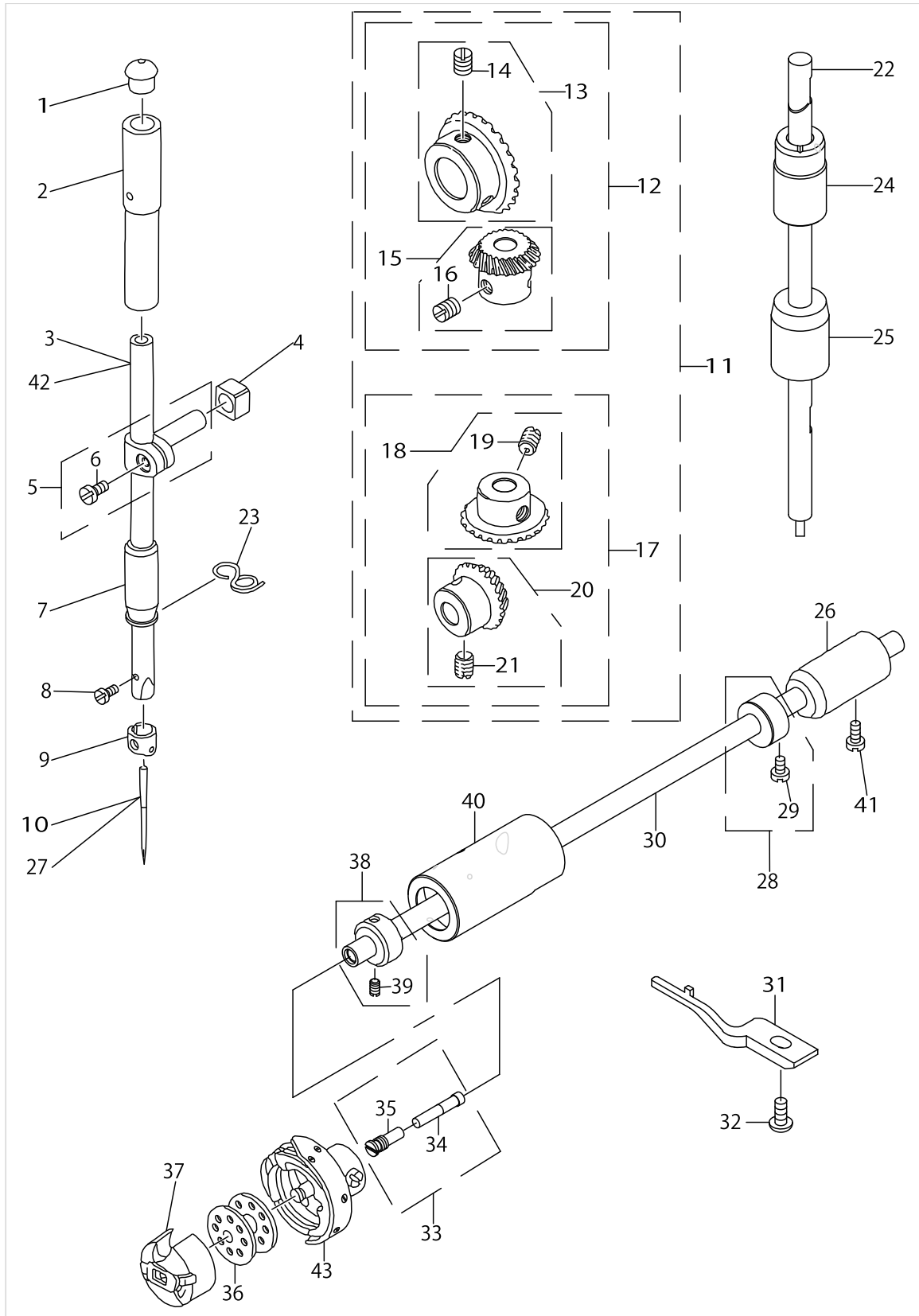


MAIN SHAFT & THREAD TAKE-UP LEVER COMPONENTS

No.	Parts No.	Parts name	Remarks	Level	Cons	Qty
1	SS8151150TP	SCREW 15/64-28 L=10.5				1
2	11017357	THREAD TAKE-UP CRANK SHAFT ASM.				1
3	22919203	OIL PROTECTING RUBBER				1
4	22918072	THREAD TAKE-UP LEVER COMPL.				1
5	22918064	THREAD TAKE-UP LEVER ASM.		*		1
6	22918304	LEFT SCREW		*		1
7	22918106	NEEDLE BAR CRANK		*		1
8	22906606	NEEDLE BAR CRANK ROD		*		1
9	22918403	NEEDLE BEARING A	SELECTIVE PART(A~D)	*		2
10	22918502	NEEDLE BEARING B	SELECTIVE PART(A~D)	*		2
11	22918601	NEEDLE BEARING C	SELECTIVE PART(A~D)	*		2
12	22918700	NEEDLE BEARING D	SELECTIVE PART(A~D)	*		2
13	40097022	COUNTER WEIGHT LM COMPL.				1
14	PS0400082KP	SPRING PIN		*		1
15	40095783	COUNTER WEIGHT_LM ASM.		*		1
16	40095784	COUNTER WEIGHT_LM		*		1
17	SS8681650TP	SCREW 9/32-28 L=16		*		1
18	SS8660610TP	SCREW 1/4-40 L=6		*		2
19	RO044240100	RUBBER RING		*		1
20	SS7681650TP	SCREW 9/32-28 L=16		*		1
21	22904155	MAIN SHAFT THRUST COLLAR ASM.				1
22	SS8660610TP	SCREW 1/4-40 L=6		*		2
23	22910053	FEED DRIVE ECCENTRIC CAM ASM.				1
24	SS6661110SP	SCREW 1/4-40 L=11		*		2
25	22910004	FEED DRIVE ECCENTRIC CAM		*		1
26	22910103	THRUST COLLAR				1
27	SS4090615SP	SCREW 9/64-40 L=6				2
28	RC1850001KP	SNAP RING 18.5				1
29	11002409	MAIN SHAFT BUSHING REAR				1
30	40105231	OIL SEAL				1
31	11349008	MAIN SHAFT				1
32	11071362	FLYWHEEL ASM.				1
33	SS8151550SP	SCREW 15/64-28 L=15		*		2
34	22903900	ADJUSTING PIN				1
35	RO029180100	RUBBER RING				1
36	11002904	ROLLER FELT				1
37	11349107	BUSHING FRONT				1
38	11349453	BALANCER ASM.				1
39	SS7150940SP	SCREW 15/64-28 L=9		*		2
40	B1215552000	OIL ADJUSTING COLLAR				1
41	22903306	BUSHING INTERMEDIATE				1



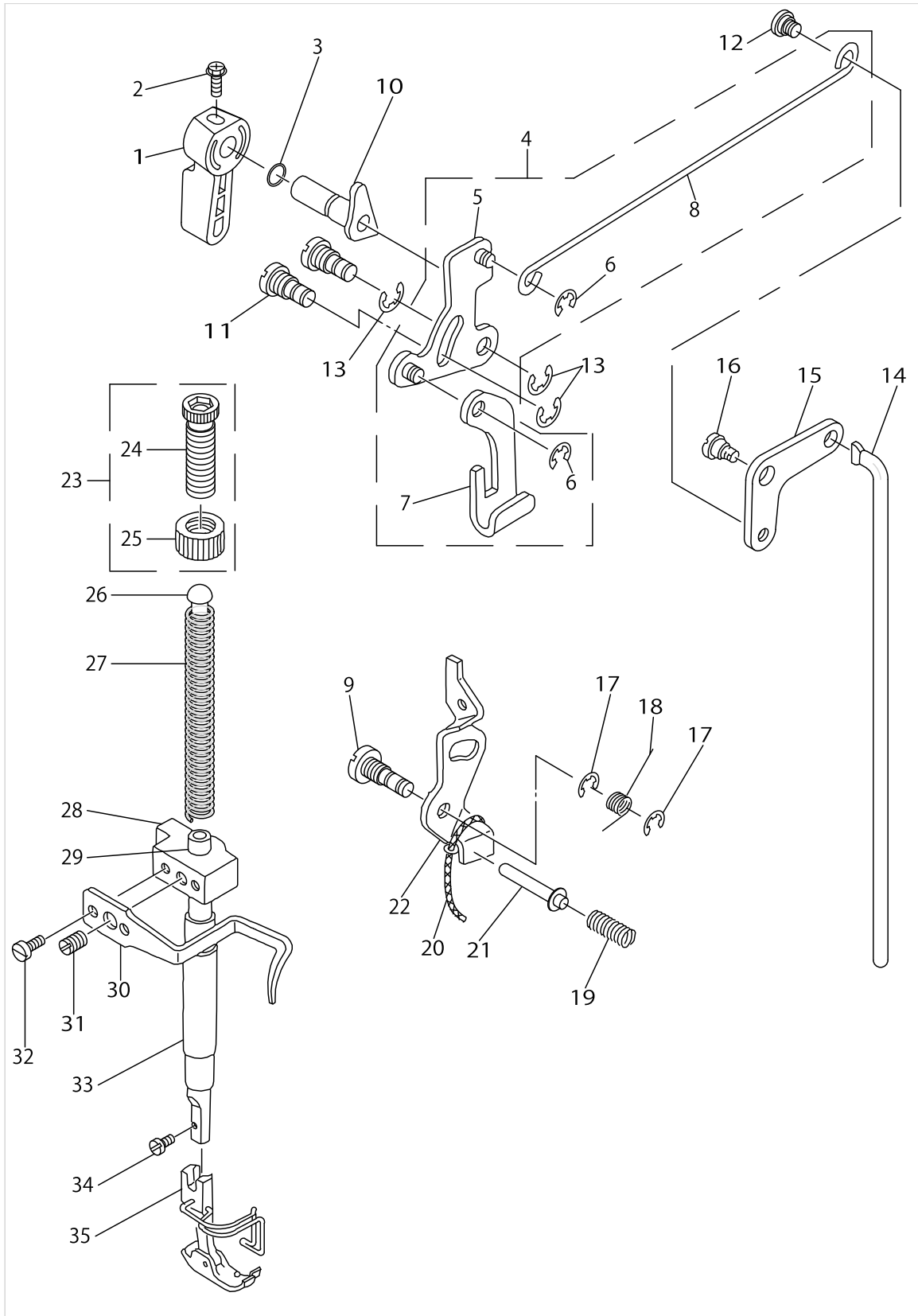
NEEDLE BAR, UPRIGHT SHAFT & HOOK DRIVING SHAFT COMPONENTS



NEEDLE BAR, UPRIGHT SHAFT & HOOK DRIVING SHAFT COMPONENTS

No.	Parts No.	Parts name	Remarks	Level	Cons	Qty
1	22901409	NEEDLE BAR UPPER BUSH CAP				1
2	22906101	NEEDLE BAR BUSHING UPPER				1
3	B1401522A00A	NEEDLE BAR (A)				1
4	40090058	SLIDE BLOCK				1
5	22906457	NEEDLE BAR HOLDER ASM.				1
6	SS6090670TP	SCREW 9/64-40 L=6		*		1
7	22906200	NEEDLE BAR BUSHING LOWER				1
8	SS7080510TP	SCREW 1/8-44 L=4.5				1
9	11331204	NEEDLE BAR THREAD GUIDE				1
10	MDB100B1400	NEEDLE DBX1 #14				1
11	B13061550C0	GEAR & PINION ASM.				1
12	B13061550B0	GEAR & PINION ASM. UPPER		*		1
13	B13050120A0	GEAR ASM.		*		1
14	SS8660810TP	SCREW 1/4-40 L=8		*		2
15	B13061550A0	PINION ASM.		*		1
16	SS8660810TP	SCREW 1/4-40 L=8		*		2
17	B13071550B0	GEAR & PINION ASM. LOWER		*		1
18	B13071550A0	GEAR ASM. LARGE		*		1
19	SS8660810TP	SCREW 1/4-40 L=8		*		2
20	B13081550A0	PINION ASM.		*		1
21	SS8660810TP	SCREW 1/4-40 L=8		*		2
22	22905004	UPRIGHT SHAFT				1
23	11331303	NEEDLE BAR THREAD GUIDE				1
24	22905103	UPRIGHT SHAFT BUSHING UPPER				1
25	11004207	UPRIGHT SHAFT BUSHING LOWER				1
26	22916308	HOOK DRIVING SHAFT BUSH REAR				1
27	MC200500900	NEEDLE 134 90	FOR JE			1
28	22917157	THRUST COLLAR ASM. REAR				1
29	SS6110420TP	SCREW 11/64-40 L=4.8		*		2
30	22916001	HOOK DRIVING SHAFT				1
31	22916407	BOBBIN CASE POSITIONING FINGER				1
32	SS4110915TP	SCREW 11/64-40 L=9				1
33	22916555	OIL SEAL SCREW ASM.				1
34	11015906	OIL WICK		*		1
35	22916506	SET SCREW		*		1
36	22932909	BOBBIN				1
37	B18370120A0	BOBBIN CASE ASM.				1
38	22917058	THRUST COLLAR ASM. FRONT				1
39	SS8110410TP	SCREW 11/64-40 L= 3.5		*		2
40	22916100	HOOK DRIVING SHAFT BUSH FRONT				1
41	SS4120915SP	SCREW 3/16-28 L=9				1
42	B1401522B00A	NEEDLE BAR(B)	FOR JE			1
43	B18301270A0	HOOK ASM.				1

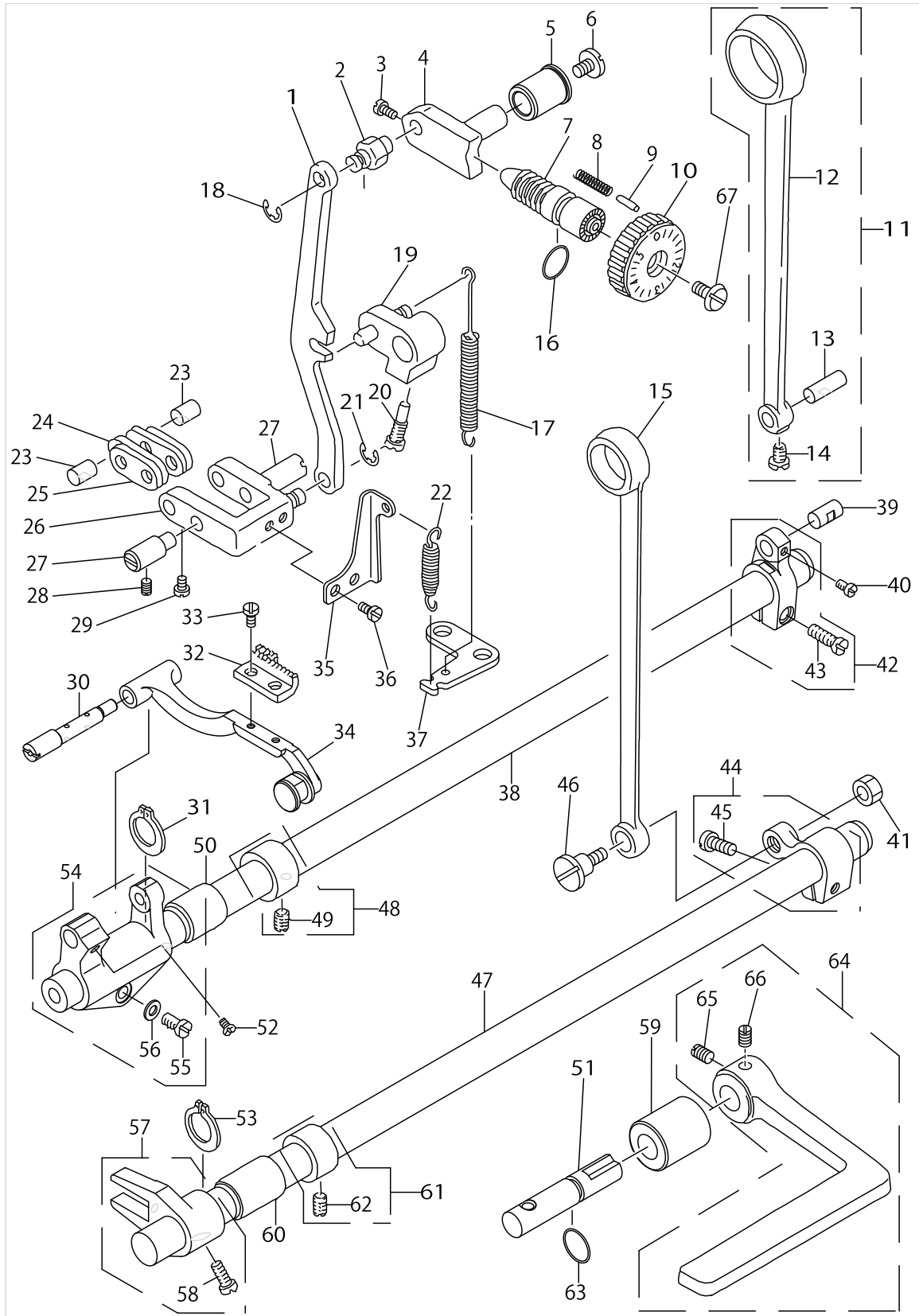
# HAND LIFTER COMPONENTS



HAND LIFTER COMPONENTS

No.	Parts No.	Parts name	Remarks	Level	Cons	Qty
1	22907802	HAND LIFTER				1
2	B1521555000	SCREW				1
3	RO037180100	RUBBER RING				1
4	22908354	KNEE LIFTING CROSS ROD ASM.				1
5	22908156	LIFTING LINK ASM.		*		1
6	RE0500000K0	E-RING		*		2
7	22908008	LIFTING PLATE		*		1
8	22908305	KNEE LIFTER SIDE ROD		*		1
9	22920102	THREAD RELEASE SHAFT				1
10	11092558	HAND LIFTER CAM ASM.				1
11	22908701	LINK SHAFT				2
12	22908909	HINGE SCREW				1
13	RE0500000K0	E-RING				3
14	22909006	KNEE LIFTER CONNECTING ROD				1
15	22908800	KNEE LIFTER LINK				1
16	SD0720331SP	HINGE SCREW D= 7.24 H= 3.3				1
17	RE0500000K0	E-RING				2
18	22920201	RETURN SPRING				1
19	22920409	THREAD RELEASE PIN SPRING				1
20	CQ202000000	OIL WICK				0.14
21	22920300	THREAD RELEASE SUPPORTING PIN				1
22	22920003	THREAD RELEASE PLATE				1
23	22907554	PRESSER SPRING REGULATOR ASM.				1
24	22907505	PRESSER SPRING REGULATOR		*		1
25	22907604	PRESSER SPRING REGULATOR NUT		*		1
26	22907703	PRESSER GUIDE BAR				1
27	22907406	PRESSER SPRING				1
28	22907208	PRESSER BAR GUIDE BRACKET				1
29	B1501522000	PRESSER BAR				1
30	22907307	THREAD GUIDE				1
31	SS8660810TP	SCREW 1/4-40 L=8				1
32	SS6090910SP	SCREW 9/64-40 L=9				2
33	40060989	PRESSER BAR BUSHING LOWER				1
34	SS7091110TP	SCREW 9/64-40 L=10.5				1
35	B1524522NB0A	PRESSER FOOT ASM.	SEE THE TABLE OF EXCHANGING GAUGES			1

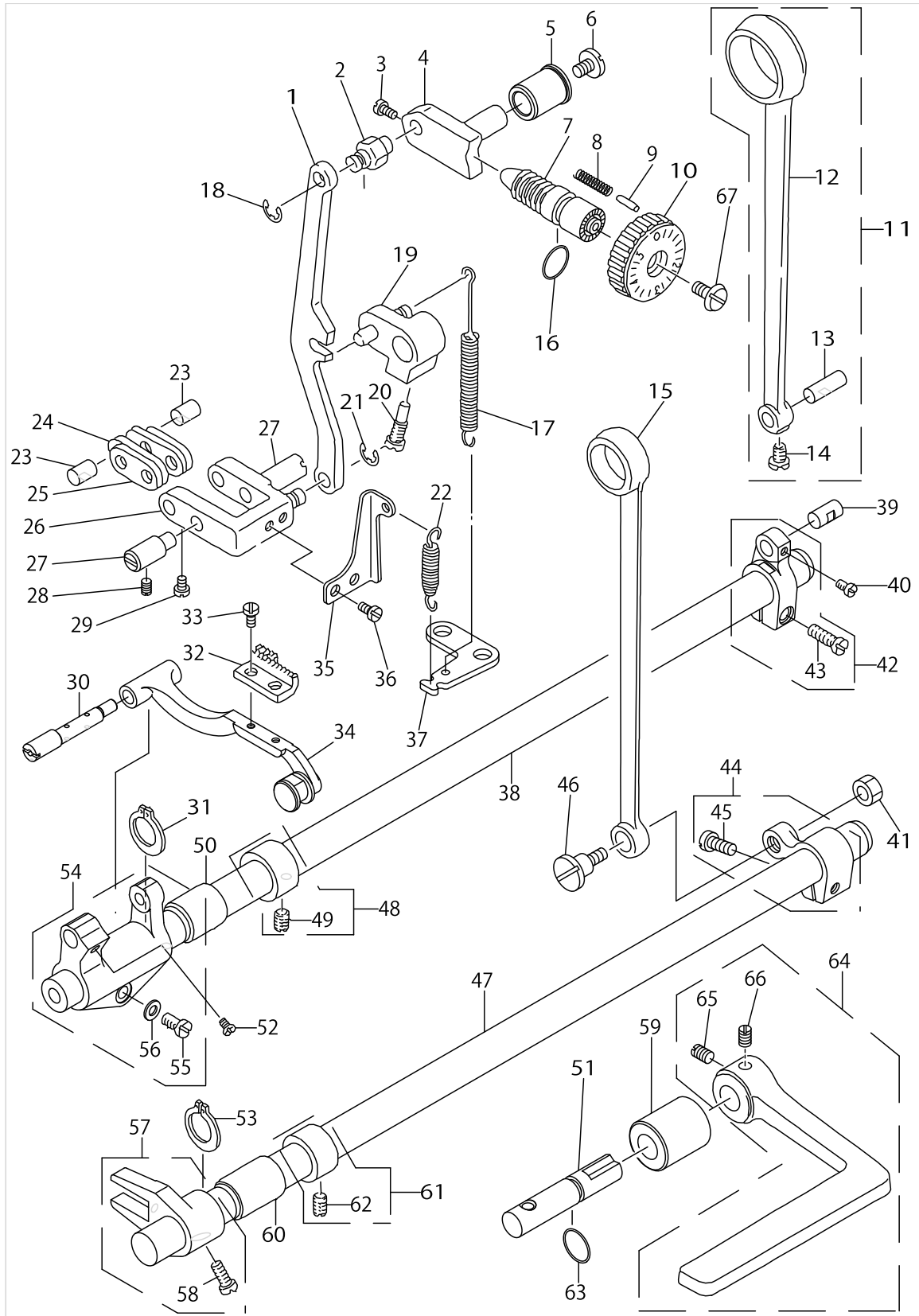
FEED MECHANISM COMPONENTS



FEED MECHANISM COMPONENTS

No.	Parts No.	Parts name	Remarks	Level	Cons	Qty
1	22911408	FEED REGULATOR CONNCTING ROD				1
2	22911507	WALKING FOOT PIN C				1
3	SS6090670TP	SCREW 9/64-40 L=6				2
4	11009701	FEED REGULATOR				1
5	22911705	FEED REGULATOR BUSHING				1
6	SS7120770SH	SCREW 3/16-28 L=7				1
7	22911804	FEED REGULATOR SCREW				1
8	22912109	FEED REGULATOR PIN SPRING				1
9	22912000	FEED REGULATOR PIN				1
10	11071909	FEED DIAL				1
11	22910251	ROCKERSHAFTCONNECTINGRODASM.				1
12	22910202	ROCKER SHAFT CONNECTING ROD		*		1
13	22911101	WALKING FOOT PIN C		*		1
14	SS6090620TP	SCREW		*		1
15	22915003	CONNECTING ROD				1
16	RO092270200	RUBBER RING				1
17	11010303	FEED REVERSE SPRING				1
18	RE0500000K0	E-RING				1
19	22912257	FEED REVERSE ARM ASM.				1
20	22912505	FEED REVERSE ARM SCREW				1
21	RE0500000K0	E-RING				1
22	11009404	ADJUSTING LINK SPRING				1
23	22910905	WALKING FOOT PIN A				2
24	40089548	CONNECTING LINK B				2
25	40093417	CONNECTING LINK A				2
26	11008455	WALKING FOOT ADJUSTING LINK				1
27	22910806	ADJUST LINK FULCRUM SHAFT A				2
28	SS8150710TP	SCREW 15/64-28 L=7				2
29	SS6090620TP	SCREW				2
30	22940803	FEED BAR SHAFT				1
31	RC0150001KP	RETAINING RING 13.8				1
32	B1613522N00A	FEED DOG	SEE THE TABLE OF EXECHANGING GAUGES			1
33	SS4080620TP	SCREW 1/8-44 L=6				2
34	22971857	FEED BASE ASM.				1
35	22941306	REGULATOR LINK SPRING HOOK				1
36	SS4110515SP	SCREW 11/64-40 L=5				2
37	22913701	FEED SPRING HOOK				1
38	22912901	FEED ROCKER SHAFT				1
39	22911002	WALKING FOOT PIN B				1
40	SS6090620TP	SCREW				1
41	NS6680410SP	NUT 9/32-28				1
42	22910350	FEED ROCKER SHAFT CRANK ASM.				1
43	SS6121610SP	SCREW 3/16-28 L=15.5		*		1
44	22915151	FEED ARM COMPL.				1
45	SS7121610SP	SCREW 3/16-28 L=15.5		*		1
46	SD1000801SH	HINGE SCREW D=10 H=8				1

FEED MECHANISM COMPONENTS

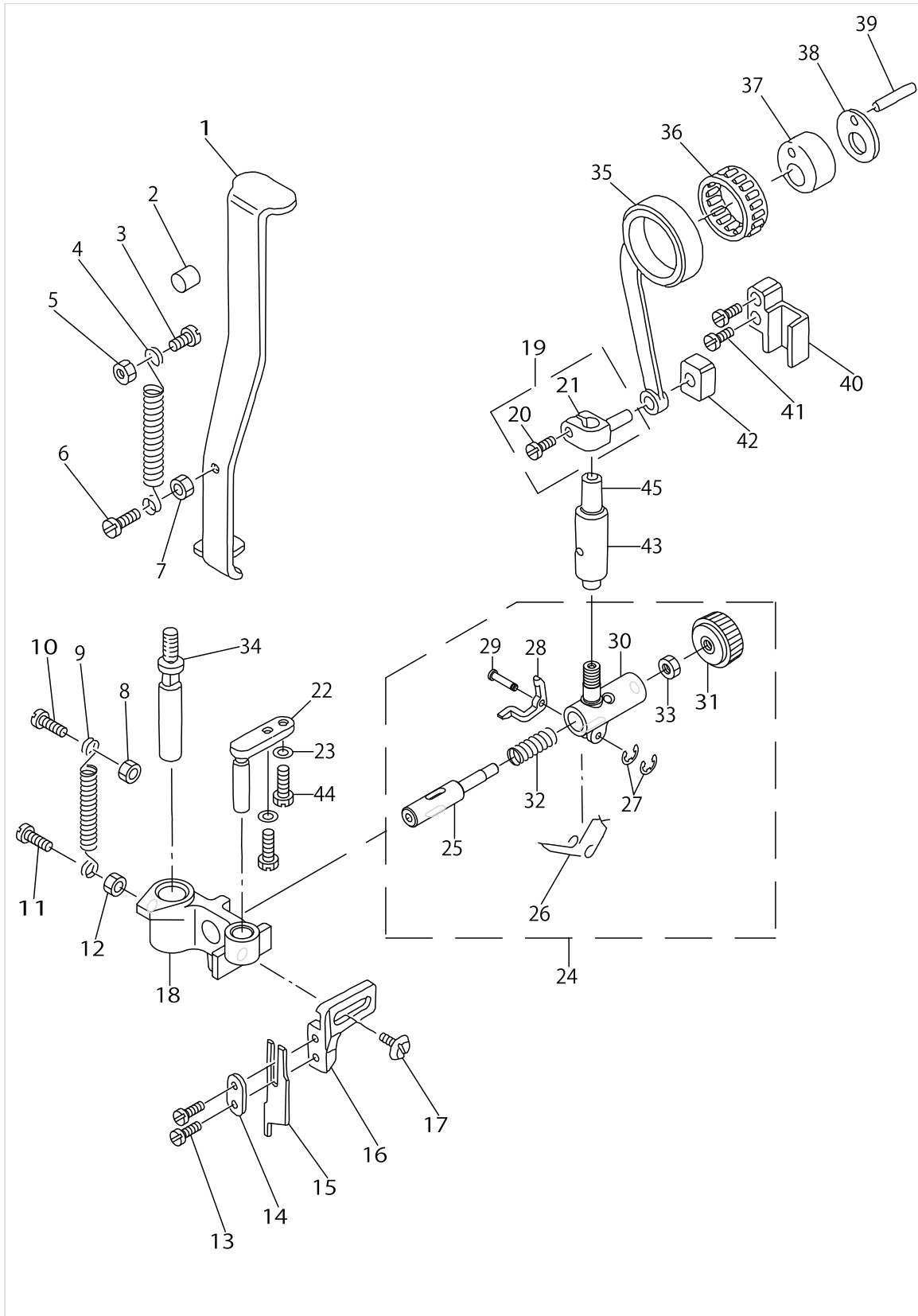


FEED MECHANISM COMPONENTS

No.	Parts No.	Parts name	Remarks	Level	Cons	Qty
47	22915201	FEED DRIVING SHAFT				1
48	22904155	MAIN SHAFT THRUST COLLAR ASM.				1
49	SS8660610TP	SCREW 1/4-40 L=6		*		2
50	22913008	FEED ROCKER SHAFT BUSHING				1
51	40100084	FEED LEVER SHAFT				1
52	SS7110740TP	SCREW 11/64-40 L=7				1
53	RC0150001KP	RETAINING RING 13.8				1
54	22940654	FEED ROCKER ASM.				1
55	SS7121410TP	SCREW 3/16-28 L=14		*		1
56	WP0480856SP	WASHER 4.8X8.4X0.8		*		1
57	22915359	DRIVING SHAFT CRANK ASM.				1
58	SS7111120SP	SCREW 11/64-40 L=10.5		*		1
59	22912802	FEED LEVER SHAFT BUSHING				1
60	22913008	FEED ROCKER SHAFT BUSHING				1
61	22904155	MAIN SHAFT THRUST COLLAR ASM.				1
62	SS8660610TP	SCREW 1/4-40 L=6		*		2
63	RO078190100	RUBBER RING				1
64	22912752	FEED LEVER ASM.				1
65	SM8061010TP	SCREW		*		1
66	SM8061050TP	SCREW		*		1
67	SS6121860SP	SCREW 3/16-28 L=18				1



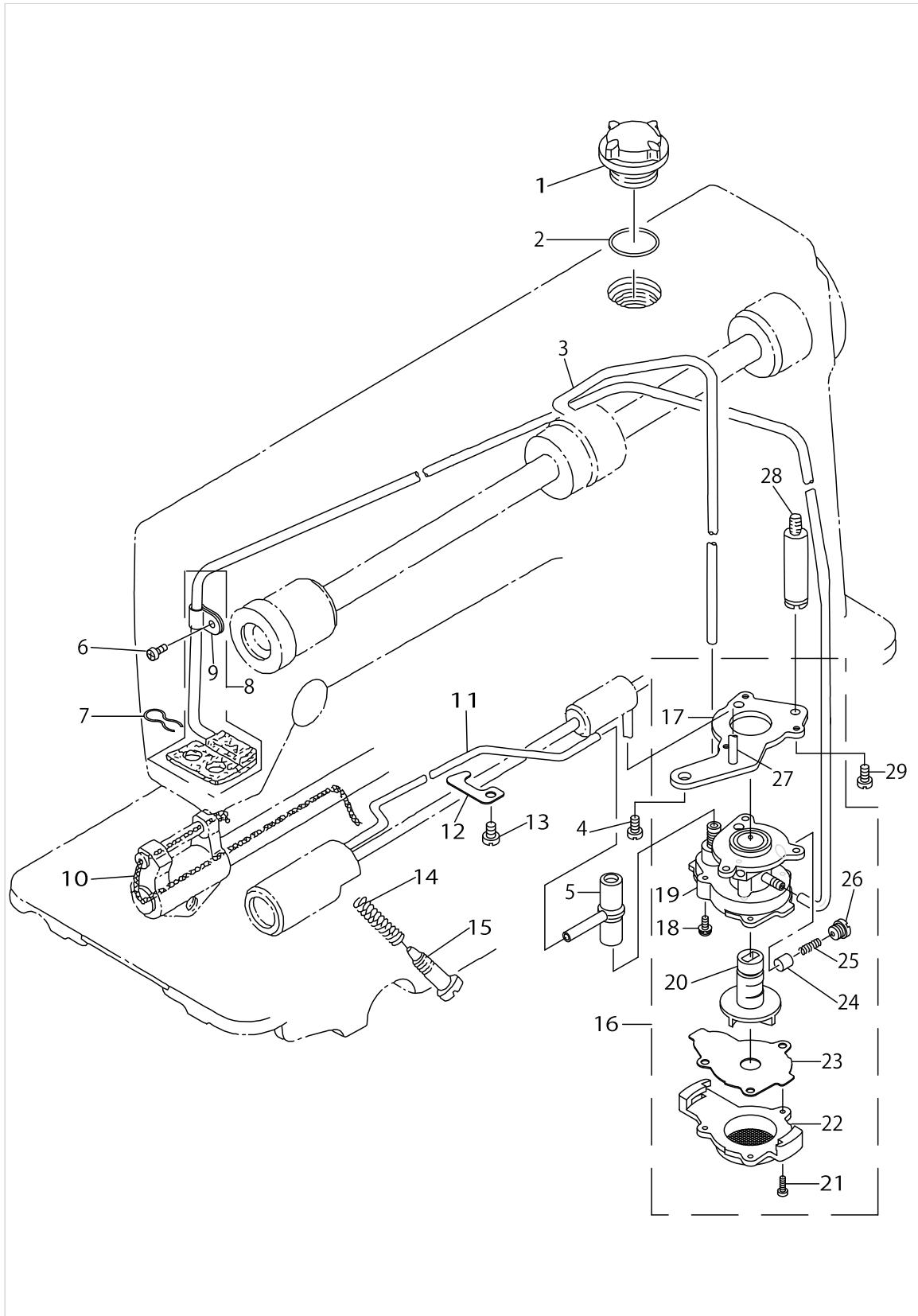
# KNIFE COMPONENTS



## KNIFE COMPONENTS

No.	Parts No.	Parts name	Remarks	Level	Cons	Qty
1	11332400	KNIFE POSITIONING PLATE				1
2	B4131522000	FELT				1
3	SS4090815SP	SCREW 9/64-40 L=8				1
4	B4133522000	TENSION SPRING				1
5	NS6090310SP	NUT 9/64-40				1
6	SS4090815SP	SCREW 9/64-40 L=8				1
7	NS6090310SP	NUT 9/64-40				1
8	NS6120310SP	NUT 3/16-28				1
9	B4119522000	TENSION SPRING				1
10	SS6121010SP	SCREW 3/16-28 L=10				1
11	SS6111010TP	SCREW 11/64-40 L= 9.5				1
12	NS6110420SP	NUT 11/64-40				1
13	SS4080620TP	SCREW 1/8-44 L=6				2
14	B4122522000	WASHER				1
15	B4121522000	KNIFE	SEE THE TABLE OF EXECHANGING GAUGES			1
16	B4120522000	KNIFE HOLDER				1
17	SS6110810TP	SCREW 11/64-40 L=8				1
18	B4113522000A	KNIFE DRIVING BLOCK				1
19	40080466	KNIFE DRIVING STUD CONNECTION				1
20	SS6090810TP	SCREW 9/64-40 L=7.5		*		1
21	11332202	KNIFE DRIVING STUD CONNECTION		*		1
22	B4115522000	GUIDE STUD FOR KNIFE DRIVING B				1
23	WP0480856SP	WASHER 4.8X8.4X0.8				2
24	B41035220A0A	CLUTCH RETAINER ASM.				1
25	B4111522000A	KNIFE DRIVING ROD CLUTCH PIN		*		1
26	B4125522000	SPRING		*		1
27	RE0200000K0	E-RING		*		2
28	B4124522000	KNIFE RELEASE LEVER		*		1
29	B4126522000A	KNIFE RELEASE LEVER PIN		*		1
30	40094031	KNIFE DRIVING ROD CLUTCH RETAI		*		1
31	B4109522000A	KNIFE DRIVING ROD CLUTCH KNOB		*		1
32	B4110522000	SPRING		*		1
33	NM6040001SD	NUT M4		*		1
34	B4114522000	KNIFE DRIVING BLOCK STUD				1
35	11332301	KNIFE DRIVING ROD				1
36	B4123522000	KNIFE NEEDLE BEARING				1
37	B4106522000B	KNIFE CAM				1
38	B4132522000A	THRUST PLATE				1
39	B4107522000	PIN				1
40	B4108522000	SLIDE BLOCK GUIDE				1
41	SS6121060SP	SCREW 3/16-28 L=9.5				2
42	B1414555000	SLIDE BLOCK				1
43	B4116530000	BUSHING				1
44	SS9120910TP	SCREW 3/16-28 L=9				2
45	B4102522000	KNIFE DRIVING STUD				1

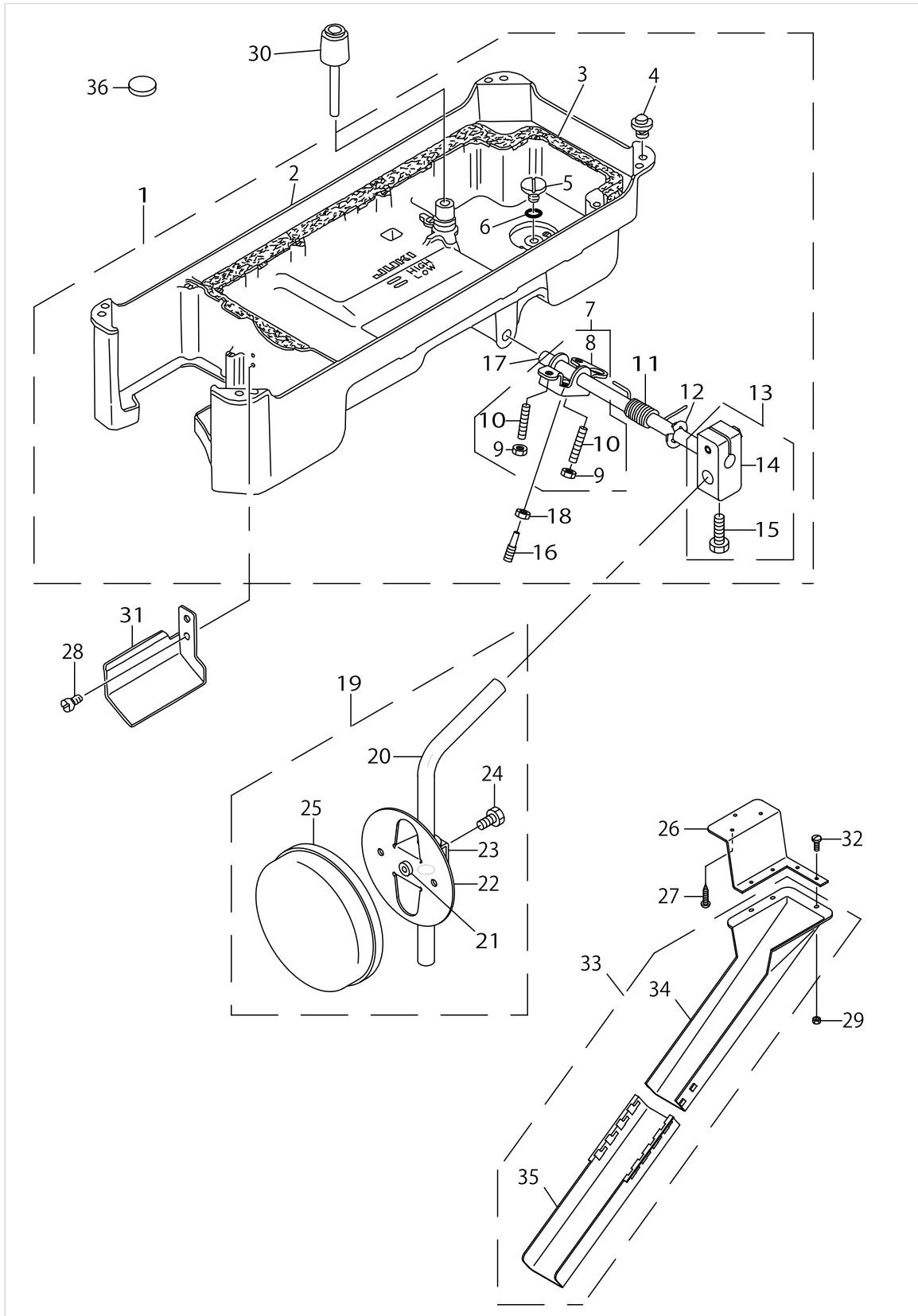
OIL LUBRICATION COMPONENTS



OIL LUBRICATION COMPONENTS

No.	Parts No.	Parts name	Remarks	Level	Cons	Qty
1	22924708	OIL SIGHT WINDOW				1
2	RO195240100	RUBBER RING				1
3	22924401	MAIN SHAFT OIL TUBE				1
4	SS4150915SP	SCREW 15/64-28 L=9				1
5	22924609	RUBBER JOINT				1
6	SS4120615SP	SCREW 3/16-28 L=6				1
7	22925101	OIL FELT PRESSER				1
8	11331758	OIL RETURN TUBE ASM.				1
9	22924302	RETURN PIPE HOLDER		*		1
10	CQ252000000	OIL WICK				0.3
11	22924500	HOOK OIL TUBE				1
12	22924807	PIPE HOLDER LOWER				1
13	SS4150915SP	SCREW 15/64-28 L=9				1
14	22924906	OIL REGULATOR SCREW SPRING				1
15	22925002	OIL REGULATOR SCREW				1
16	22923056	OIL PUMP ASM.				1
17	22923312	PUMP BODY INSTALLING PLATE		*		1
18	SL4030851SF	SCREW M3 L=8		*		3
19	22923015	PUMP BODY		*		1
20	22923700	IMPELLER		*		1
21	SE4301041SR	SCREW D=3 L=10		*		3
22	22923205	PUMP BODY COVER		*		1
23	22923809	PUMP BODY SUPPORT PLATE		*		1
24	22923403	PLUNGER		*		1
25	22923601	PLUNGER SPRING		*		1
26	22923502	PLUNGER SCREW		*		1
27	22923908	HOOK DRIVING SHAFT OILING PIPE		*		1
28	22924005	PUMP BODY STRUT				1
29	SS6111010TP	SCREW 11/64-40 L= 9.5				1

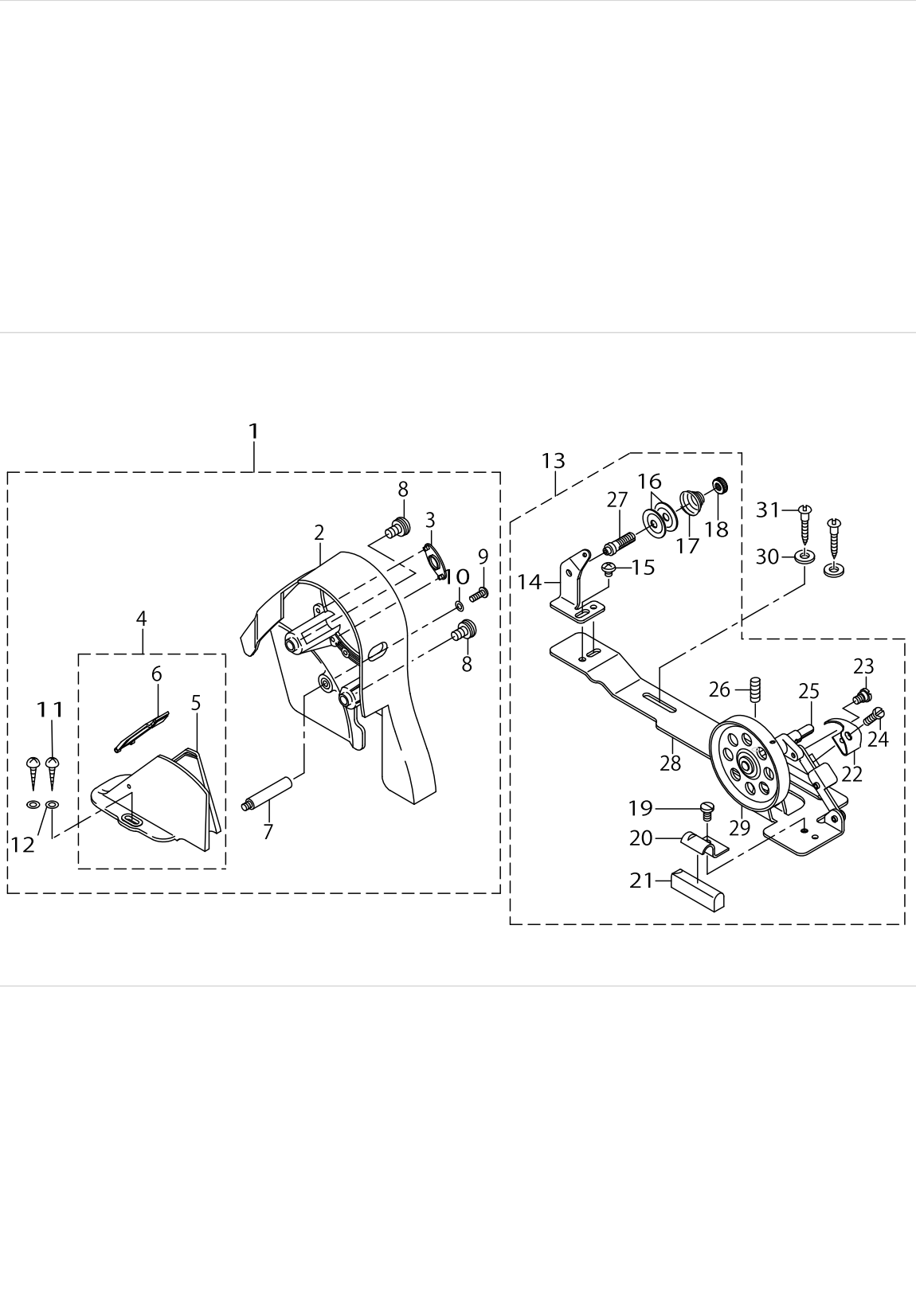
# OIL RESERVOIR COMPONENTS



OIL RESERVOIR COMPONENTS

No.	Parts No.	Parts name	Remarks	Level	Cons	Qty
1	11360757	OIL RESERVOIR ASM.				1
2	11360708	OIL RESERVOIR		*		1
3	11023108	GASKET		*		1
4	11047107	RUBBER CUSHION		*		4
5	SS6700710SH	SCREW 5/16-24 L=7		*		1
6	RO098240100	RUBBER RING		*		1
7	22932156	KNEE LIFTER ROTATION ARM ASM.		*		1
8	22932107	KNEE LIFTER ROTATION ARM		*		1
9	NM6060001SE	NUT M6		*		2
10	SM8063012TR	SCREW M6 L=30		*		2
11	22932206	SPRING		*		1
12	RE1000000K0	E-RING 10		*		1
13	22932453	BRACKET ASM.		*		1
14	22932404	BRACKET		*		1
15	22934707	BRECKET SCREW		*		2
16	40101720	SCREW_M6		*		1
17	22932305	KNEE PRESS CROSS SHAFT		*		1
18	NM6060001SE	NUT M6		*		1
19	22934251	KNEE PAD PLATE ASM.				1
20	22934608	KNEE PAD UPRIGHT SHAFT		*		1
21	22934400	KNEE PAD PLATE RUBBER		*		1
22	22934202	KNEE PAD PLATE		*		1
23	22934301	KNEE PAD PLATE SUPPORT		*		1
24	SM9061203SE	SCREW M6 L=12		*		1
25	22934509	KNEE PAD PLATE COVER		*		1
26	40064815	WASTE MATERIAL CHUTE HOLDER				1
27	SK3412000SC	WOOD SCREW D=4.1 L=20				3
28	SS4110715SP	SCREW 11/64-40 L=7				2
29	NS6090310SP	NUT 9/64-40				3
30	11024304	KNEE PRESS LIFTER ROD				1
31	11361003	OIL PUSH GUIDE				1
32	SS7091110SP	SCREW 9/64-40 L=10.5				3
33	40056521	WASTE MATERIAL CHUTE HOLDER ASM.				1
34	40053719	CLOTH WASTE CHUTE UPPER		*		1
35	12341806	CLOTH WASTE CHUTE		*		1
36	B8228125000	OIL RESERVOIR MAGNET				1

BELT COVER & BOBBIN WINDER COMPONENTS

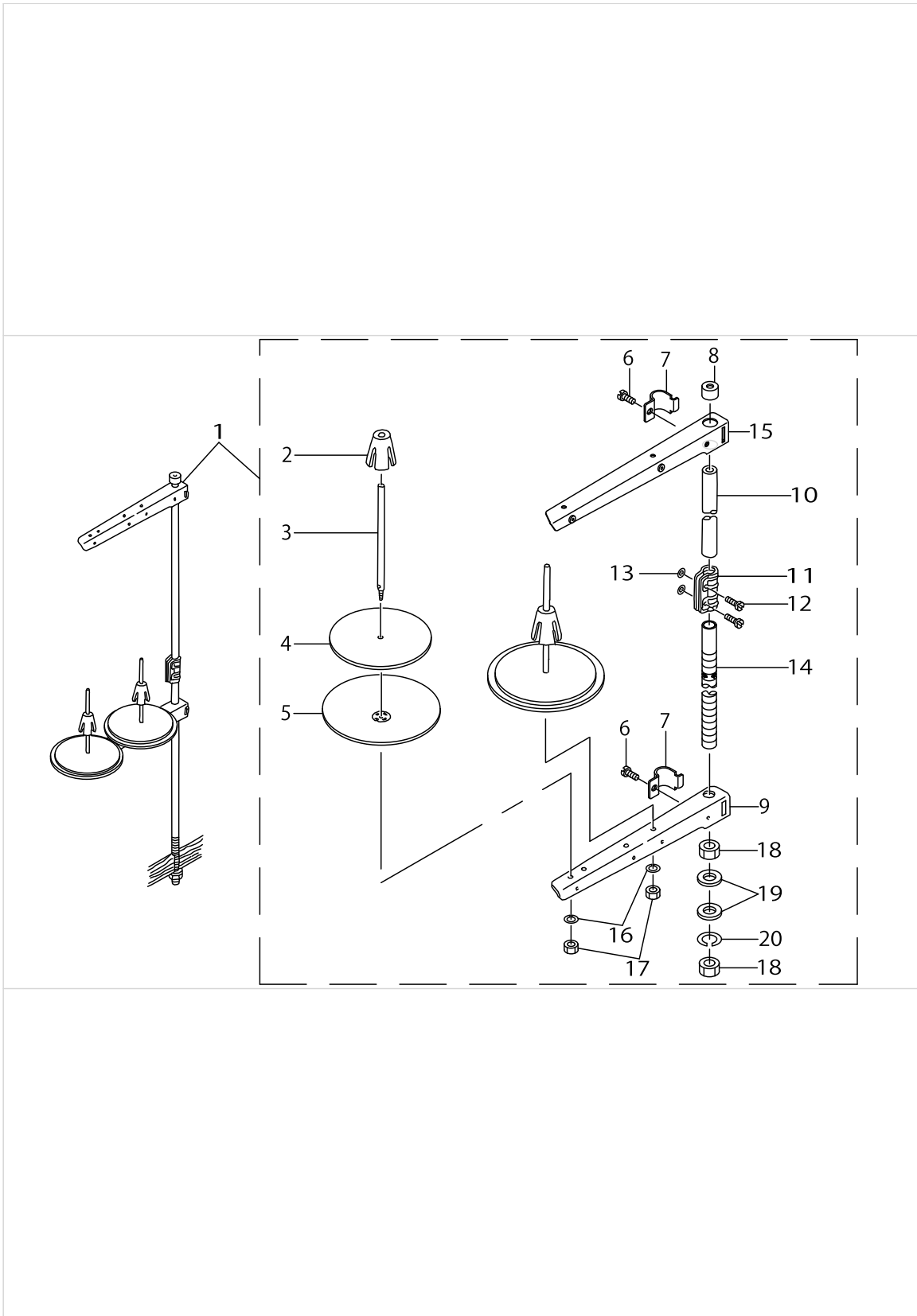


BELT COVER & BOBBIN WINDER COMPONENTS

No.	Parts No.	Parts name	Remarks	Level	Cons	Qty
1	22933451	BELT COVER ASM.				1
2	22933402	BELT COVER A		*		1
3	22933501	BELT COVER A CAP		*		1
4	22933659	BELT COVER B COMPL.		*		1
5	22933600	BELT COVER B		*		1
6	22933758	BELT COVER B LID ASM.		*		1
7	22933907	BELT COVER STRUT		*		1
8	22934004	SET SCREW		*		2
9	SS4121415SP	SCREW 3/16-28 L=14		*		1
10	WP0501016SD	WASHER 5X10.5X1		*		1
11	SK3412000SC	WOOD SCREW D=4.1 L=20		*		2
12	WP0450826SC	WASHER 4.5X10X0.8		*		2
13	22927354	BOBBIN WINDER COMPL.				1
14	22928501	THREAD TENSION POST BASE		*		1
15	SS4110515SP	SCREW 11/64-40 L=5		*		1
16	22928907	THREAD TENSION DISK		*		2
17	22929004	THREAD TENSION SPRING		*		1
18	22928808	NUT		*		1
19	SS7110350SP	SCREW 11/64-40 L=3.5		*		1
20	22928402	CONTROL RUBBER HOLDING PLATE		*		1
21	22928303	CONTROL RUBBER		*		1
22	22928105	BOBBIN PRESSER		*		1
23	SD0490261SP	HINGE SCREW D=4.9 H=2.6		*		1
24	SS7081310SP	SCREW 1/8-44 L=12.5		*		1
25	22927602	BOBBIN WINDER SPINDLE		*		1
26	SS8110510SP	SCREW 11/64-40 L=5		*		1
27	22928709	THREAD TENSION POST		*		1
28	22927305	BOBBIN WINDER BASE		*		1
29	22927404	BOBBIN WINDER		*		1
30	WP0450826SC	WASHER 4.5X10X0.8				2
31	SK3412000SC	WOOD SCREW D=4.1 L=20				2



# THREAD STAND COMPONENTS



THREAD STAND COMPONENTS

No.	Parts No.	Parts name	Remarks	Level	Cons	Qty
1	22930358	THREAD STAND ASM.				1
2	22931109	SPOOL RETAINER		*		2
3	22931000	SPOOL PIN		*		2
4	22930903	SPOOL REST CUSHION		*		2
5	22930804	SPOOL REST		*		2
6	SM6061610SC	SCREW M6 L=16		*		2
7	22930705	THREAD GUIDE ARM JOINT		*		2
8	22931406	SPOOL REST ROD RUBBER CAP		*		1
9	22930507	SPOOL REST ARM		*		1
10	22930408	SPOOL REST ROD UPPER		*		1
11	22931307	SPOOL REST ROD JOINT		*		1
12	SM4051405SE	SCREW M5 L=14		*		2
13	NM6050001SE	NUT M5		*		2
14	22930309	SPOOL REST ROD LOWER		*		1
15	22930556	THREAD STANDING ARM ASM.		*		1
16	WS0510002KN	SPRING WASHER		*		2
17	NM6050001SE	NUT M5		*		2
18	NM6160511SE	NUT M16X1.5		*		2
19	WP1612616SE	WASHER 16.1X30X2.6		*		2
20	WS1643202KR	SPRING WASHER		*		1

TABLE OF EXECHANGING GAUGES (1)






Specifications of the sub-gauge	Gauge width	1		2		3		4		5		Type	Note
		Throat plate		Throat plate cover		Gauge		Throat plate chip guard		Throat plate chip guard accessory			
		針板		針板蓋 (組) *付属品		ゲージ		針板布屑カバー		針板布屑ガイド *付属品			
サブゲージ仕様	サブゲージ巾											仕様	備考
		Ref.no	Part no	Ref.no	Part no	Ref.no	Part no	Ref.no	Part no	Ref.no	Part no		
CA	5/64" (2.0mm)	1	11346004	19	B11155310AD	37	B1190522Y0A	55	11346905	73	11347002	Spare parts type 補用パーツ仕様	Cut-after knife type 後メスタイプ
C	3/32" (2.4mm)	2	11346004	20	B11155310AD	38	B1190522X00	56	11346905	74	11347002	Special type 特別仕様	
CB	3/32" (2.4mm)	3	11346004	21	B11155310AD	39	B1190522X0B	57	11346905	75	11347002	Spare parts type 補用パーツ仕様	As compared with B1190522X00, the grooves of the feed dog are 3 rows instead of 2 rows. B1190522X00に対し、送り溝を2溝 3列にしたもの
D	1/8" (3.2mm)	4	11346004	22	B11155310AD	40	B1190522S00	58	11346905	76	11347002	Standard type 標準仕様	In case of the gauge of 6mm or more, this gauge is packed with the accessories. (Limited to JA,JE,JH,TP.) ゲージ巾6mm以上の場合に付属同梱(JA,JE,JH,TPに限定)
E	5/32" (4.0mm)	5	11346004	23	B11155310AD	41	B1190522Y00	59	11346905	77	11347002	Special type 特別仕様	
EA	5/32" (4.0mm)	6	11346004	24	B11155310AD	42	11362753	60	11346905	78	11347002	Spare parts type 補用パーツ仕様	For pattern seamer パターンシーマ用
EB	5/32" (4.0mm)	7	11346004	25	B11155310AD	43	B1190522Y0R	61	11346905	79	11347002	Spare parts type 補用パーツ仕様	As compared with B1190522X00, the grooves of the feed dog are 3 rows instead of 2 rows. B1190522X00に対し、送り溝を2溝 3列にしたもの
F	3/16" (4.8mm)	8	11346004	26	B11155300AF	44	B1190522T00	62	11346905	80	11347002	Special type 特別仕様	
FA	3/16" (4.8mm)	9	11346004	27	B11155300AF	45	B1190522T0A	63	11346905	81	11347002	Spare parts type 補用パーツ仕様	Cut-before knife type 前メスタイプ
FB	3/16" (4.8mm)	10	11346004	28	B11155300AF	46	B1190522Y0C	64	11346905	82	11347002	Spare parts type 補用パーツ仕様	As compared with B1190522T00, the needle hole of which diameter is set to 1.9 to 1.2mm. B1190522T00に対し針穴径を1.9→1.2mmに
FC	3/16" (4.8mm)	11	11346004	29	B11155300AF	47	B1190522T0D	65	11346905	83	11347002	Special type 特別仕様	As compared with B1190522X00, the grooves of the feed dog are 3 rows instead of 2 rows. B1190522X00に対し、送り溝を2溝 3列にしたもの
G	27/128" (5.3mm)	12	11346004	30	B11155300AF	48	B1190522Y0F	66	11347101	84	11347200	Spare parts type 補用パーツ仕様	
H	1/4" (6.4mm)	13	11346004	31	B11155300AF	49	B1190522U00	67	11347101	85	11347200	Special type 特別仕様	In case of the gauge of 6mm or more, this gauge is packed with the accessories. (Limited to JA,JE,JH,TP.) ゲージ巾6mm以上の場合に付属同梱(JA,JE,JH,TPに限定)
HA	1/4" (6.4mm)	14	11346301	32	B11155300AF	50	B1190522U0AA	68	11347101	86	11347200	Spare parts type 補用パーツ仕様	For preventing material from being caught by the 4-teeth food dog 4枚歯布ずまり防止用
K	5/16" (7.9mm)	15	11346004	33	B11155300AF	51	B1190522Y0B	69	11347101	87	11347200	Spare parts type 補用パーツ仕様	
M	3/8" (9.5mm)	16	11346004	34	B11155300AM	52	B1190522V00	70	11347309	88	11347408	Special type 特別仕様	
MA	3/8" (9.5mm)	17	11346004	35	B11155300AM	53	B1190522V0A	71	11347309	89	11347408	Spare parts type 補用パーツ仕様	As compared with B1190522W00, the feed amount of the feed dog is reduced. B1190522W00に対して送り溝長さを短縮
P	7/16" (11.1mm)	18	11346004	36	B11155300AM	54	B1190522Y0M	72	11347309	90	11347408	Spare parts type 補用パーツ仕様	

TABLE OF EXECHANGING GAUGES (1)

No.	Parts No.	Parts name	Remarks	Level	Cons	Qty
1	11346004	NEEDLE PLATE A				1
2	11346004	NEEDLE PLATE A				1
3	11346004	NEEDLE PLATE A				1
4	11346004	NEEDLE PLATE A				1
5	11346004	NEEDLE PLATE A				1
6	11346004	NEEDLE PLATE A				1
7	11346004	NEEDLE PLATE A				1
8	11346004	NEEDLE PLATE A				1
9	11346004	NEEDLE PLATE A				1
10	11346004	NEEDLE PLATE A				1
11	11346004	NEEDLE PLATE A				1
12	11346004	NEEDLE PLATE A				1
13	11346004	NEEDLE PLATE A				1
14	11346301	NEEDLE PLATE A				1
15	11346004	NEEDLE PLATE A				1
16	11346004	NEEDLE PLATE A				1
17	11346004	NEEDLE PLATE A				1
18	11346004	NEEDLE PLATE A				1
19	B11155310AD	THROAT PLATE COVER ASM.				1
20	B11155310AD	THROAT PLATE COVER ASM.				1
21	B11155310AD	THROAT PLATE COVER ASM.				1
22	B11155310AD	THROAT PLATE COVER ASM.				1
23	B11155310AD	THROAT PLATE COVER ASM.				1
24	B11155310AD	THROAT PLATE COVER ASM.				1
25	B11155310AD	THROAT PLATE COVER ASM.				1
26	B11155300AF	THROAT PLATE OPEN COVER				1
27	B11155300AF	THROAT PLATE OPEN COVER				1
28	B11155300AF	THROAT PLATE OPEN COVER				1
29	B11155300AF	THROAT PLATE OPEN COVER				1
30	B11155300AF	THROAT PLATE OPEN COVER				1
31	B11155300AF	THROAT PLATE OPEN COVER				1
32	B11155300AF	THROAT PLATE OPEN COVER				1
33	B11155300AF	THROAT PLATE OPEN COVER				1
34	B11155300AM	THROAT PLATE PLUG ASM. M				1
35	B11155300AM	THROAT PLATE PLUG ASM. M				1
36	B11155300AM	THROAT PLATE PLUG ASM. M				1
37	B1190522Y0A	GAUGE PLATE 5/64				1
38	B1190522X00	GAUGE PLATE 3/32 (X)				1
39	B1190522X0B	GAUGE 3/32XB				1
40	B1190522S00	GAUGE PLATE 1/8 S				1
41	B1190522Y00	GAUGE PLATE 5/32 (Y)				1
42	11362753	GAUGE ASM. 5/32 E				1
43	B1190522Y0R	GAUGE 5/32YR				1
44	B1190522T00	GAUGE PLATE 3/16 (T)				1
45	B1190522T0A	GUAGE PLATE 3/16 (TA)				1
46	B1190522Y0C	GAUGE 3/16 (NEEDLE HOLE 1.2)				1
47	B1190522T0D	GAUGE 3/16TD				1

TABLE OF EXECHANGING GAUGES (1)






Specifications of the sub-gauge	Gauge width	1		2		3		4		5		Type	Note
		Throat plate		Throat plate cover		Gauge		Throat plate chip guard		Throat plate chip guard accessory			
		針板		針板蓋 (組) *付属品		ゲージ		針板布屑カバー		針板布屑ガイド *付属品			
サブゲージ仕様	サブゲージ巾											仕様	備考
		Ref.no	Part no	Ref.no	Part no	Ref.no	Part no	Ref.no	Part no	Ref.no	Part no		
CA	5/64" (2.0mm)	1	11346004	19	B11155310AD	37	B1190522Y0A	55	11346905	73	11347002	Spare parts type 補助パーツ仕様	Cut-after knife type 後メスタイプ
C	3/32" (2.4mm)	2	11346004	20	B11155310AD	38	B1190522X00	56	11346905	74	11347002	Special type 特別仕様	
CB	3/32" (2.4mm)	3	11346004	21	B11155310AD	39	B1190522X0B	57	11346905	75	11347002	Spare parts type 補助パーツ仕様	As compared with B1190522X00, the grooves of the feed dog are 3 rows instead of 2 rows. B1190522X00に対し、送り溝を2溝 3列にしたもの
D	1/8" (3.2mm)	4	11346004	22	B11155310AD	40	B1190522500	58	11346905	76	11347002	Standard type 標準仕様	In case of the gauge of 6mm or more, this gauge is packed with the accessories. (Limited to JA,JE,JH,TP.) ゲージ巾6mm以上の場合に付属同梱(JA,JE,JH,TPに限定)
E	5/32" (4.0mm)	5	11346004	23	B11155310AD	41	B1190522Y00	59	11346905	77	11347002	Special type 特別仕様	
EA	5/32" (4.0mm)	6	11346004	24	B11155310AD	42	11362753	60	11346905	78	11347002	Spare parts type 補助パーツ仕様	For pattern seamer パターンシーマ用
EB	5/32" (4.0mm)	7	11346004	25	B11155310AD	43	B1190522Y0R	61	11346905	79	11347002	Spare parts type 補助パーツ仕様	As compared with B1190522X00, the grooves of the feed dog are 3 rows instead of 2 rows. B1190522X00に対し、送り溝を2溝 3列にしたもの
F	3/16" (4.8mm)	8	11346004	26	B11155300AF	44	B1190522T00	62	11346905	80	11347002	Special type 特別仕様	
FA	3/16" (4.8mm)	9	11346004	27	B11155300AF	45	B1190522T0A	63	11346905	81	11347002	Spare parts type 補助パーツ仕様	Cut-before knife type 前メスタイプ
FB	3/16" (4.8mm)	10	11346004	28	B11155300AF	46	B1190522Y0C	64	11346905	82	11347002	Spare parts type 補助パーツ仕様	As compared with B1190522T00, the needle hole of which diameter is set to 1.9 to 1.2mm. B1190522T00に対し針穴径を1.9→1.2mmに
FC	3/16" (4.8mm)	11	11346004	29	B11155300AF	47	B1190522T0D	65	11346905	83	11347002	Special type 特別仕様	As compared with B1190522X00, the grooves of the feed dog are 3 rows instead of 2 rows. B1190522X00に対し、送り溝を2溝 3列にしたもの
G	27/128" (5.3mm)	12	11346004	30	B11155300AF	48	B1190522Y0F	66	11347101	84	11347200	Spare parts type 補助パーツ仕様	
H	1/4" (6.4mm)	13	11346004	31	B11155300AF	49	B1190522U00	67	11347101	85	11347200	Special type 特別仕様	In case of the gauge of 6mm or more, this gauge is packed with the accessories. (Limited to JA,JE,JH,TP.) ゲージ巾6mm以上の場合に付属同梱(JA,JE,JH,TPに限定)
HA	1/4" (6.4mm)	14	11346301	32	B11155300AF	50	B1190522U0AA	68	11347101	86	11347200	Spare parts type 補助パーツ仕様	For preventing material from being caught by the 4-teeth food dog 4枚歯布ずまり防止用
K	5/16" (7.9mm)	15	11346004	33	B11155300AF	51	B1190522Y0B	69	11347101	87	11347200	Spare parts type 補助パーツ仕様	
M	3/8" (9.5mm)	16	11346004	34	B11155300AM	52	B1190522V00	70	11347309	88	11347408	Special type 特別仕様	
MA	3/8" (9.5mm)	17	11346004	35	B11155300AM	53	B1190522V0A	71	11347309	89	11347408	Spare parts type 補助パーツ仕様	As compared with B1190522W00, the feed amount of the feed dog is reduced. B1190522W00に対して送り溝長さを短縮
P	7/16" (11.1mm)	18	11346004	36	B11155300AM	54	B1190522Y0M	72	11347309	90	11347408	Spare parts type 補助パーツ仕様	

TABLE OF EXECHANGING GAUGES (1)

No.	Parts No.	Parts name	Remarks	Level	Cons	Qty
48	B1190522Y0F	GAUGE 27/128				1
49	B1190522U00	GAUGE PLATE 1/4 (U)				1
50	B1190522U0AA	GAUGE 1/4UA				1
51	B1190522Y0B	GAUGE				1
52	B1190522V00	GAUGE PLATE 3/8 (V)				1
53	B1190522V0A	FEED VA				1
54	B1190522Y0M	GAUGE				1
55	11346905	WASTE MATERIAL GUARD E				1
56	11346905	WASTE MATERIAL GUARD E				1
57	11346905	WASTE MATERIAL GUARD E				1
58	11346905	WASTE MATERIAL GUARD E				1
59	11346905	WASTE MATERIAL GUARD E				1
60	11346905	WASTE MATERIAL GUARD E				1
61	11346905	WASTE MATERIAL GUARD E				1
62	11346905	WASTE MATERIAL GUARD E				1
63	11346905	WASTE MATERIAL GUARD E				1
64	11346905	WASTE MATERIAL GUARD E				1
65	11346905	WASTE MATERIAL GUARD E				1
66	11347101	WASTE MATERIAL GUARD G				1
67	11347101	WASTE MATERIAL GUARD G				1
68	11347101	WASTE MATERIAL GUARD G				1
69	11347101	WASTE MATERIAL GUARD G				1
70	11347309	WASTE MATERIAL GUARD K				1
71	11347309	WASTE MATERIAL GUARD K				1
72	11347309	WASTE MATERIAL GUARD K				1
73	11347002	WASTE MATERIAL GUARD E				1
74	11347002	WASTE MATERIAL GUARD E				1
75	11347002	WASTE MATERIAL GUARD E				1
76	11347002	WASTE MATERIAL GUARD E				1
77	11347002	WASTE MATERIAL GUARD E				1
78	11347002	WASTE MATERIAL GUARD E				1
79	11347002	WASTE MATERIAL GUARD E				1
80	11347002	WASTE MATERIAL GUARD E				1
81	11347002	WASTE MATERIAL GUARD E				1
82	11347002	WASTE MATERIAL GUARD E				1
83	11347002	WASTE MATERIAL GUARD E				1
84	11347200	WASTE MATERIAL GUARD G				1
85	11347200	WASTE MATERIAL GUARD G				1
86	11347200	WASTE MATERIAL GUARD G				1
87	11347200	WASTE MATERIAL GUARD G				1
88	11347408	WASTE MATERIAL GUARD K				1
89	11347408	WASTE MATERIAL GUARD K				1
90	11347408	WASTE MATERIAL GUARD K				1

TABLE OF EXECHANGING GAUGES (2)

Specifications of the sub-gauge  サブゲージ仕様	Gauge width  サブゲージ幅	1		2		3		4		Type  仕様	Note  備考
		Chip guard 布屑ガイド		Hinging presser (asm) 自由押え(組)		Feed dog 送り歯		Knife メス			
		Ref.no	Part no	Ref.no	Part no	Ref.no	Part no	Ref.no	Part no		
CA	5/64" (2.0mm)	1	11346400	19	B1524522NB0A	37	B1613522N00A	55	B4145530C00	Spare parts type 補用パーツ仕様	Cut-after knife type 後メスタイプ
C	3/32" (2.4mm)	2	11346400	20	B1524522NB0A	38	B1613522N00A	56	B4121522000	Special type 特別仕様	
CB	3/32" (2.4mm)	3	11346400	21	B1524522NB0A	39	B1613522N0C	57	B4121522000	Spare parts type 補用パーツ仕様	As compared with B1190522X00, the grooves of the feed dog are 3 rows instead of 2 rows. B1190522X00に対し、送り溝を2溝 3列にしたもの
D	1/8" (3.2mm)	4	11346400	22	B1524522NB0A	40	B1613522N00A	58	B4121522000	Standard type 標準仕様	In case of the gauge of 6mm or more, this gauge is packed with the accessories. (Limited to JA,JE,JH,TP.) ゲージ幅6mm以上の場合に付属同梱(JA,JE,JH,TP)に限定
E	5/32" (4.0mm)	5	11346400	23	B1524522NB0A	41	B1613522N00A	59	B4121522000	Special type 特別仕様	
EA	5/32" (4.0mm)	6	11346400	24	B1524522NB0A	42	B1613522N00A	60	B4121522000	Spare parts type 補用パーツ仕様	For pattern seamer パターンシーマ用
EB	5/32" (4.0mm)	7	11346400	25	B1524522NB0A	43	B1613522N0D	61	B4121522000	Spare parts type 補用パーツ仕様	As compared with B1190522X00, the grooves of the feed dog are 3 rows instead of 2 rows. B1190522X00に対し、送り溝を2溝 3列にしたもの
F	3/16" (4.8mm)	8	11346400	26	B1524522NB0A	44	B1613522N00A	62	B4121522000	Special type 特別仕様	
FA	3/16" (4.8mm)	9	11346400	27	B1524522NB0A	45	B1613522N00A	63	B4121522A00	Spare parts type 補用パーツ仕様	Cut-before knife type 前メスタイプ
FB	3/16" (4.8mm)	10	11346400	28	B1524522NB0A	46	B1613522N00A	64	B4121522000	Spare parts type 補用パーツ仕様	As compared with B1190522T00 the needle hole of which diameter is set to φ1.9 to 1.2mm. B1190522T00に対し針穴径をφ1.9→1.2mmに
FC	3/16" (4.8mm)	11	11346400	29	B1524522NB0A	47	B1613522N0D	65	B4121522000	Special type 特別仕様	As compared with B1190522X00, the grooves of the feed dog are 3 rows instead of 2 rows. B1190522X00に対し、送り溝を2溝 3列にしたもの
G	2/1128" (5.3mm)	12	11346400	30	B1524522NB0A	48	B1613522N00A	66	B4121522000	Spare parts type 補用パーツ仕様	
H	1/4" (6.4mm)	13	11346509	31	B1524522AB0	49	B1613522W00A	67	B4121522000	Special type 特別仕様	In case of the gauge of 6mm or more, this gauge is packed with the accessories. (Limited to JA,JE,JH,TP.) ゲージ幅6mm以上の場合に付属同梱(JA,JE,JH,TP)に限定
HA	1/4" (6.4mm)	14	11346509	32	B1524522AB0	50	B1613522A0AA	68	B4121522000	Spare parts type 補用パーツ仕様	For preventing material from being caught by the 4-teeth food dog 4枚歯布すまり防止用
K	5/16" (7.9mm)	15	11346509	33	B1524522AB0	51	B1613522W00A	69	B4121522000	Spare parts type 補用パーツ仕様	
M	3/8" (9.5mm)	16	11346509	34	B1524522AB0	52	B1613522W00A	70	B4121522000	Special type 特別仕様	
MA	3/8" (9.5mm)	17	11346509	35	B1524522AB0	53	B1613522B00	71	B4122522000	Spare parts type 補用パーツ仕様	As compared with B1190522V00, the feed amount of the feed dog is reduced. B1190522V00に対して送り溝長さを短縮
P	7/116" (11.1mm)	18	11346608	36	B1524522AB0	54	B1613522W00A	72	B4121522000	Spare parts type 補用パーツ仕様	

TABLE OF EXECHANGING GAUGES (2)

No.	Parts No.	Parts name	Remarks	Level	Cons	Qty
1	11346400	WASTE MATERIAL GUIDE				1
2	11346400	WASTE MATERIAL GUIDE				1
3	11346400	WASTE MATERIAL GUIDE				1
4	11346400	WASTE MATERIAL GUIDE				1
5	11346400	WASTE MATERIAL GUIDE				1
6	11346400	WASTE MATERIAL GUIDE				1
7	11346400	WASTE MATERIAL GUIDE				1
8	11346400	WASTE MATERIAL GUIDE				1
9	11346400	WASTE MATERIAL GUIDE				1
10	11346400	WASTE MATERIAL GUIDE				1
11	11346400	WASTE MATERIAL GUIDE				1
12	11346400	WASTE MATERIAL GUIDE				1
13	11346509	WASTE MATERIAL GUIDE C				1
14	11346509	WASTE MATERIAL GUIDE C				1
15	11346509	WASTE MATERIAL GUIDE C				1
16	11346509	WASTE MATERIAL GUIDE C				1
17	11346509	WASTE MATERIAL GUIDE C				1
18	11346608	WASTE MATERIAL GUIDE D				1
19	B1524522NB0A	PRESSER FOOT ASM.				1
20	B1524522NB0A	PRESSER FOOT ASM.				1
21	B1524522NB0A	PRESSER FOOT ASM.				1
22	B1524522NB0A	PRESSER FOOT ASM.				1
23	B1524522NB0A	PRESSER FOOT ASM.				1
24	B1524522NB0A	PRESSER FOOT ASM.				1
25	B1524522NB0A	PRESSER FOOT ASM.				1
26	B1524522NB0A	PRESSER FOOT ASM.				1
27	B1524522NB0A	PRESSER FOOT ASM.				1
28	B1524522NB0A	PRESSER FOOT ASM.				1
29	B1524522NB0A	PRESSER FOOT ASM.				1
30	B1524522NB0A	PRESSER FOOT ASM.				1
31	B1524522AB0	PRESSER FOOT ASM.				1
32	B1524522AB0	PRESSER FOOT ASM.				1
33	B1524522AB0	PRESSER FOOT ASM.				1
34	B1524522AB0	PRESSER FOOT ASM.				1
35	B1524522AB0	PRESSER FOOT ASM.				1
36	B1524522AB0	PRESSER FOOT ASM.				1
37	B1613522N00A	FEED DOG				1
38	B1613522N00A	FEED DOG				1
39	B1613522N0C	FEED DOG (NC)				1
40	B1613522N00A	FEED DOG				1
41	B1613522N00A	FEED DOG				1
42	B1613522N00A	FEED DOG				1
43	B1613522N0D	FEED DOG ND				1
44	B1613522N00A	FEED DOG				1
45	B1613522N00A	FEED DOG				1
46	B1613522N00A	FEED DOG				1
47	B1613522N0D	FEED DOG ND				1



TABLE OF EXECHANGING GAUGES (2)

Specifications of the sub-gauge  サブゲージ仕様	Gauge width  サブゲージ幅	1		2		3		4		Type  仕様	Note  備考
		Chip guard 布屑ガイド		Hinging presser (asm) 自由押え(組)		Feed dog 送り歯		Knife メス			
		Ref.no	Part no	Ref.no	Part no	Ref.no	Part no	Ref.no	Part no		
CA	5/64" (2.0mm)	1	11346400	19	B1524522NB0A	37	B1613522N00A	55	B4145530C00	Spare parts type 補用パーツ仕様	Cut-after knife type 後メスタイプ
C	3/32" (2.4mm)	2	11346400	20	B1524522NB0A	38	B1613522N00A	56	B4121522000	Special type 特別仕様	
CB	3/32" (2.4mm)	3	11346400	21	B1524522NB0A	39	B1613522N0C	57	B4121522000	Spare parts type 補用パーツ仕様	As compared with B1190522X00, the grooves of the feed dog are 3 rows instead of 2 rows. B1190522X00に対し、送り溝を2溝 3列にしたもの
D	1/8" (3.2mm)	4	11346400	22	B1524522NB0A	40	B1613522N00A	58	B4121522000	Standard type 標準仕様	In case of the gauge of 6mm or more, this gauge is packed with the accessories. (Limited to JA,JE,JH,TP.) ゲージ幅6mm以上の場合に付属同梱(JA,JE,JH,TP)に限定
E	5/32" (4.0mm)	5	11346400	23	B1524522NB0A	41	B1613522N00A	59	B4121522000	Special type 特別仕様	
EA	5/32" (4.0mm)	6	11346400	24	B1524522NB0A	42	B1613522N00A	60	B4121522000	Spare parts type 補用パーツ仕様	For pattern seamer パターンシマ用
EB	5/32" (4.0mm)	7	11346400	25	B1524522NB0A	43	B1613522N0D	61	B4121522000	Spare parts type 補用パーツ仕様	As compared with B1190522X00, the grooves of the feed dog are 3 rows instead of 2 rows. B1190522X00に対し、送り溝を2溝 3列にしたもの
F	3/16" (4.8mm)	8	11346400	26	B1524522NB0A	44	B1613522N00A	62	B4121522000	Special type 特別仕様	
FA	3/16" (4.8mm)	9	11346400	27	B1524522NB0A	45	B1613522N00A	63	B4121522A00	Spare parts type 補用パーツ仕様	Cut-before knife type 前メスタイプ
FB	3/16" (4.8mm)	10	11346400	28	B1524522NB0A	46	B1613522N00A	64	B4121522000	Spare parts type 補用パーツ仕様	As compared with B1190522T00 the needle hole of which diameter is set to 0.19 to 1.2mm. B1190522T00に対し針穴径を0.19→1.2mmに
FC	3/16" (4.8mm)	11	11346400	29	B1524522NB0A	47	B1613522N0D	65	B4121522000	Special type 特別仕様	As compared with B1190522X00, the grooves of the feed dog are 3 rows instead of 2 rows. B1190522X00に対し、送り溝を2溝 3列にしたもの
G	27/128" (5.3mm)	12	11346400	30	B1524522NB0A	48	B1613522N00A	66	B4121522000	Spare parts type 補用パーツ仕様	
H	1/4" (6.4mm)	13	11346509	31	B1524522AB0	49	B1613522W00A	67	B4121522000	Special type 特別仕様	In case of the gauge of 6mm or more, this gauge is packed with the accessories. (Limited to JA,JE,JH,TP.) ゲージ幅6mm以上の場合に付属同梱(JA,JE,JH,TP)に限定
HA	1/4" (6.4mm)	14	11346509	32	B1524522AB0	50	B1613522A0AA	68	B4121522000	Spare parts type 補用パーツ仕様	For preventing material from being caught by the 4-teeth food dog 4枚歯布すまり防止用
K	5/16" (7.9mm)	15	11346509	33	B1524522AB0	51	B1613522W00A	69	B4121522000	Spare parts type 補用パーツ仕様	
M	3/8" (9.5mm)	16	11346509	34	B1524522AB0	52	B1613522W00A	70	B4121522000	Special type 特別仕様	
MA	3/8" (9.5mm)	17	11346509	35	B1524522AB0	53	B1613522B00	71	B4122522000	Spare parts type 補用パーツ仕様	As compared with B1190522V00, the feed amount of the feed dog is reduced. B1190522V00に対して送り溝長さを短縮
P	7/16" (11.1mm)	18	11346608	36	B1524522AB0	54	B1613522W00A	72	B4121522000	Spare parts type 補用パーツ仕様	

TABLE OF EXECHANGING GAUGES (2)

No.	Parts No.	Parts name	Remarks	Level	Cons	Qty
48	B1613522N00A	FEED DOG				1
49	B1613522W00A	FEED DOG				1
50	B1613522A0AA	FEED A				1
51	B1613522W00A	FEED DOG				1
52	B1613522W00A	FEED DOG				1
53	B1613522B00	FEED DOG B				1
54	B1613522W00A	FEED DOG				1
55	B4145530C00	KNIFE (C)				1
56	B4121522000	KNIFE				1
57	B4121522000	KNIFE				1
58	B4121522000	KNIFE				1
59	B4121522000	KNIFE				1
60	B4121522000	KNIFE				1
61	B4121522000	KNIFE				1
62	B4121522000	KNIFE				1
63	B4121522A00	KNIFE A				1
64	B4121522000	KNIFE				1
65	B4121522000	KNIFE				1
66	B4121522000	KNIFE				1
67	B4121522000	KNIFE				1
68	B4121522000	KNIFE				1
69	B4121522000	KNIFE				1
70	B4121522000	KNIFE				1
71	B4122522000	WASHER				1
72	B4121522000	KNIFE				1

LIST FOR INFORMATION OF CHANGE

As to the place changed, refer to the corresponding Rev.No.  
 When previous parts(Obsoleted part)and new parts(Added parts)are  
 not interchangeable with each other:  
 In this case,even obsoleted parts(D.)can be ordered with the  
 obsoleted part number,so select the parts with changed dates and  
 place your orders.

変更箇所は、該当Rev.No.版をご参照ください。  
 部品の互換性がない変更の場合は、削除された品番でも、ご注文できます。

29133204  
 No.0896-08 Rev.No.

\*A:Added parts追加部品/D:Obsoleted parts削除部品/E:Erratum訂正

* Rev. No.	Page 頁	Ref. No.	Parts No. 品番	* Rev. No.	Page 頁	Ref. No.	Parts No. 品番
D 07	2	55	SS-4080310-SP	A 08	2	55	SS-6080410-SP
				A 08	2	64	401-16677
D 07	4	4	110-39070	A 08	4	4	229-18072
D 07	4	5	110-39062	A 08	4	5	229-18064
D 07	4	6	B1905-541-B00				
D 07	4	7	110-05204	A 08	4	7	229-18106
D 07	4	8	B1408-552-000	A 08	4	8	229-06606
D 07	4	9	B1903-552-000	A 08	4	6	229-18304
				A 08	4	9	229-18403
				A 08	4	10	229-18502
				A 08	4	11	229-18601
				A 08	4	12	229-18700
D 07	4	10	113-31170	A 08	4	13	400-97022
				A 08	4	14	PS-0400082-KP
				A 08	4	15	400-95783
D 07	4	11	113-49214	A 08	4	16	400-95784
D 07	4	30	110-02508	A 08	4	30	401-05231
D 07	8	18	110-18207	A 08	8	18	229-20201
D 07	10	20	110-10410	A 08	10	20	229-12505
D 07	10	24	110-08703	A 08	10	24	400-89548
D 07	10	25	110-08604	A 08	10	25	400-93417
D 07	10	51	229-12604	A 08	10	51	401-00084
D 07	12	24	B4103-522-0A0	A 08	12	24	B4103-522-0A0-A
D 07	12	30	B4103-522-000-A	A 08	12	30	400-94031
D 07	14	17	229-23304	A 08	14	17	229-23312
D 07	14	19	229-23007	A 08	14	19	229-23015
D 07	16	16	SM-9062563-TR	A 08	16	16	401-01720

## HOW TO MAKE USE OF THIS PARTS LIST

### 1.Explanation of codes

1)"\*"mark.....means this part is changed from the previous parts book.

As to the details of the change, refer to the "List for information of change".

2)"#01".....refer to "Note" explanation at bottom of page.

### 2.Codes on the "Qty" column

- Each numeral indicates the number of parts required.
- "0.1" and "2.5" indicate the length (in meters) of the respective parts.

3.Parentheses mean that the corresponding part is a subpart that constructs an assembly part.

4.Dotted lines on the Figures indicate assembly parts.

### 1."注記"欄の記号説明

1) "\*"印.....前回のパーツブックに比較して今回変更された部品を意味します。

変更内容は、"変更情報リスト"を参照してください。

2) "#01".....ページ下の"注記"の説明を参照してください。

2.数量欄の数字は、個数を表し、0.1、2.5等の数値は、長さ（単位メートル）を表します。

3.数量欄の（ ）は、組部品を構成している子部品であることを意味します。

4.イラストページの-----枠は、組構成であることを意味します。

# NUMERICAL INDEX OF PARTS

PART NO	PAGE	REF NO.	PART NO	PAGE	REF NO.	PART NO	PAGE	REF NO.
11000304	2	2	11361003	20	31	22910806	12	27
11002409	6	29	11362753	26	42	22910905	12	23
11002904	6	36	11415205	4	53	22911002	12	39
11003308	2	11	12341806	20	35	22911101	12	13
11004207	8	25	22900401	2	10	22911408	12	1
11008455	12	26	22900609	2	20	22911507	12	2
11009404	12	22	22900757	2	6	22911705	12	5
11009701	12	4	22901003	4	47	22911804	12	7
11010303	12	17	22901201	2	44	22912000	12	9
11015906	8	34	22901250	2	43	22912109	12	8
11017357	6	2	22901300	2	45	22912257	12	19
11023108	20	3	22901409	8	1	22912505	12	20
11024304	20	30	22901805	4	62	22912752	14	64
11047107	20	4	22903306	6	41	22912802	14	59
11071362	6	32	22903900	6	34	22912901	12	38
11071909	12	10	22904155	6	21	22913008	14	60
11092558	10	10	22904155	14	61	22913701	12	37
11330602	2	3	22905004	8	22	22915003	12	15
11331204	8	9	22905103	8	24	22915151	12	44
11331303	8	23	22906101	8	2	22915201	14	47
11331402	2	39	22906200	8	7	22915359	14	57
11331758	18	8	22906457	8	5	22916001	8	30
11332202	16	21	22906606	6	8	22916100	8	40
11332301	16	35	22907208	10	28	22916308	8	26
11332400	16	1	22907307	10	30	22916407	8	31
11336559	2	1	22907406	10	27	22916506	8	35
11346004	4	58	22907505	10	24	22916555	8	33
11346004	26	18	22907554	10	23	22917058	8	38
11346301	26	14	22907604	10	25	22917157	8	28
11346400	4	54	22907703	10	26	22918064	6	5
11346400	30	12	22907802	10	1	22918072	6	4
11346509	30	17	22908008	10	7	22918106	6	7
11346608	30	18	22908156	10	5	22918304	6	6
11346905	4	57	22908305	10	8	22918403	6	9~12
11346905	28	65	22908354	10	4	22918502	6	9~12
11347002	28	83	22908701	10	11	22918601	6	9~12
11347101	28	69	22908800	10	15	22918700	6	9~12
11347200	28	87	22908909	10	12	22919203	6	3
11347309	28	72	22909006	10	14	22920003	10	22
11347408	28	90	22910004	6	25	22920102	10	9
11349008	6	31	22910053	6	23	22920201	10	18
11349107	6	37	22910103	6	26	22920300	10	21
11349453	6	38	22910202	12	12	22920409	10	19
11360708	20	2	22910251	12	11	22920508	2	23
11360757	20	1	22910350	12	42	22920706	2	19

NUMERICAL INDEX OF PARTS

PART NO	PAGE	REF NO.	PART NO	PAGE	REF NO.	PART NO	PAGE	REF NO.
22920904	2	36	22930556	24	15	40089548	12	24
22921001	2	24	22930705	24	7	40090058	8	4
22921209	2	31	22930804	24	5	40093417	12	25
22921308	2	26	22930903	24	4	40094031	16	30
22921407	2	27	22931000	24	3	40095783	6	15
22921506	2	30	22931109	24	2	40095784	6	16
22921605	2	32	22931307	24	11	40097022	6	13
22921704	2	28	22931406	24	8	40100084	14	51
22921803	2	29	22932107	20	8	40101720	20	16
22923015	18	19	22932156	20	7	40105231	6	30
22923056	18	16	22932206	20	11	40116677	4	64
22923205	18	22	22932305	20	17	B1115522000A	4	50
22923312	18	17	22932404	20	14	B11155300AF	26	33
22923403	18	24	22932453	20	13	B11155300AM	26	36
22923502	18	26	22932503	2	13	B111553100D	4	49
22923601	18	25	22932552	2	12	B11155310AD	4	48
22923700	18	20	22932602	2	14	B11155310AD	26	25
22923809	18	23	22932701	2	15	B1190522S00	2	37
22923908	18	27	22932909	8	36	B1190522S00	26	40
22924005	18	28	22933402	22	2	B1190522T00	26	44
22924302	18	9	22933451	22	1	B1190522T0A	26	45
22924401	18	3	22933501	22	3	B1190522T0D	26	47
22924500	18	11	22933600	22	5	B1190522U00	28	49
22924609	18	5	22933659	22	4	B1190522U0AA	28	50
22924708	18	1	22933758	22	6	B1190522V00	28	52
22924807	18	12	22933907	22	7	B1190522V0A	28	53
22924906	18	14	22934004	22	8	B1190522X00	26	38
22925002	18	15	22934202	20	22	B1190522X0B	26	39
22925101	18	7	22934251	20	19	B1190522Y00	26	41
22927305	22	28	22934301	20	23	B1190522Y0A	26	37
22927354	22	13	22934400	20	21	B1190522Y0B	28	51
22927404	22	29	22934509	20	25	B1190522Y0C	26	46
22927602	22	25	22934608	20	20	B1190522Y0F	28	48
22928105	22	22	22934707	20	15	B1190522Y0M	28	54
22928303	22	21	22940654	14	54	B1190522Y0R	26	43
22928402	22	20	22940803	12	30	B1193530000	4	56
22928501	22	14	22941306	12	35	B1215552000	6	40
22928709	22	27	22945307	2	33	B13050120A0	8	13
22928808	22	18	22945356	2	25	B13061550A0	8	15
22928907	22	16	22971857	12	34	B13061550B0	8	12
22929004	22	17	40053719	20	34	B13061550C0	8	11
22930309	24	14	40056521	20	33	B13071550A0	8	18
22930358	24	1	40060989	10	33	B13071550B0	8	17
22930408	24	10	40064815	20	26	B13081550A0	8	20
22930507	24	9	40080466	16	19	B1401522A00A	8	3

# NUMERICAL INDEX OF PARTS

PART NO	PAGE	REF NO.	PART NO	PAGE	REF NO.	PART NO	PAGE	REF NO.
B1401522B00A	8	42	CM300200001	4	61	SS2110920TP	2	59
B1414555000	16	42	CM301300001	4	63	SS2110920TP	4	59
B1501522000	10	29	CQ202000000	10	20	SS4080310SP	4	52
B1521555000	10	2	CQ252000000	18	10	SS4080620TP	12	33
B1524522AB0	30	36	MC200500900	8	27	SS4080620TP	16	13
B1524522NB0A	10	35	MDB100B1400	8	10	SS4090615SP	6	27
B1524522NB0A	30	30	NM6040001SD	16	33	SS4090815SP	16	6
B1613522A0AA	32	50	NM6050001SE	24	17	SS4110515SP	12	36
B1613522B00	32	53	NM6060001SE	20	18	SS4110515SP	22	15
B1613522N00A	12	32	NM6160511SE	24	18	SS4110715SP	20	28
B1613522N00A	30	48	NS6090310SP	16	7	SS4110915TP	8	32
B1613522N00A	32	48	NS6090310SP	20	29	SS4120615SP	2	22
B1613522N0C	30	39	NS6110420SP	16	12	SS4120615SP	18	6
B1613522N0D	30	47	NS6120310SP	16	8	SS4120915SP	2	9
B1613522W00A	32	54	NS6680410SP	12	41	SS4120915SP	8	41
B18301270A0	8	43	PS0400082KP	6	14	SS4121415SP	22	9
B18370120A0	8	37	RC0150001KP	12	53	SS4121615SP	2	42
B4102522000	16	45	RC0150001KP	14	53	SS4150915SP	18	13
B41035220A0A	16	24	RC1850001KP	6	28	SS6060210SP	2	46
B4106522000B	16	37	RE0200000K0	16	27	SS6080320SP	4	51
B4107522000	16	39	RE0500000K0	10	17	SS6080410SP	2	60
B4108522000	16	40	RE0500000K0	12	21	SS6080410SP	4	60
B4109522000A	16	31	RE1000000K0	20	12	SS6090620TP	12	40
B4110522000	16	32	RO029180100	6	35	SS6090670TP	8	6
B4111522000A	16	25	RO037180100	10	3	SS6090670TP	12	3
B4113522000A	16	18	RO044240100	6	19	SS6090810TP	16	20
B4114522000	16	34	RO078190100	14	63	SS6090910SP	10	32
B4115522000	16	22	RO092270200	12	16	SS6110420TP	8	29
B4116530000	16	43	RO098240100	20	6	SS6110610TP	2	40
B4119522000	16	9	RO195240100	18	2	SS6110810TP	16	17
B4120522000	16	16	SD0380552SL	2	16	SS6111010TP	16	11
B4121522000	16	15	SD0490261SP	22	23	SS6111010TP	18	29
B4121522000	32	72	SD0720331SP	10	16	SS6121010SP	16	10
B4121522A00	32	63	SD1000801SH	12	46	SS6121060SP	16	41
B4122522000	16	14	SE4301041SR	18	21	SS6121610SP	12	43
B4122522000	32	71	SK3412000SC	20	27	SS6121860SP	14	67
B4123522000	16	36	SK3412000SC	22	31	SS6661110SP	6	24
B4124522000	16	28	SL4030851SF	18	18	SS6700710SH	20	5
B4125522000	16	26	SM4051405SE	24	12	SS7080510TP	8	8
B4126522000A	16	29	SM6061610SC	24	6	SS7081310SP	22	24
B4131522000	16	2	SM8061010TP	14	65	SS7091110SP	20	32
B4132522000A	16	38	SM8061050TP	14	66	SS7091110TP	10	34
B4133522000	16	4	SM8063012TR	20	10	SS7110350SP	22	19
B4145530C00	32	55	SM9061203SE	20	24	SS7110740TP	14	52
B8228125000	20	36	SS1110840SP	2	4	SS7111120SP	14	58

## NUMERICAL INDEX OF PARTS

PART NO	PAGE	REF NO.
SS7120770SH	12	6
SS7121410TP	14	55
SS7121610SP	12	45
SS7150940SP	6	39
SS7681650TP	6	20
SS8090670SP	2	34
SS8110410TP	8	39
SS8110510SP	22	26
SS8150710TP	2	35
SS8150710TP	12	28
SS8151150TP	6	1
SS8151550SP	6	33
SS8660610TP	6	22
SS8660610TP	14	62
SS8660810TP	8	21
SS8660810TP	10	31
SS8681650TP	6	17
SS9120910TP	16	44
TA0850604R0	2	7
TA1250406R0	2	41
TA1250705R0	2	8
TA2000502R0	2	17
TA2101002R0	2	18
WP0450826SC	22	30
WP0480856SP	14	56
WP0480856SP	16	23
WP0501016SD	22	10
WP1612616SE	24	19
WS0510002KN	24	16
WS1643202KR	24	20